

PART - I : GENERAL INTELLIGENCE

Directions : In questions no. 1 to 9, select the related word/letters/number from the given alternatives.

1. Life : Death :: Hope : ?
 (A) Weep (B) Pain
 (C) Despair (D) Sadness
2. Christian : Muslim :: ? : Quran
 (A) Geeta (B) Ramayan
 (C) Angel (D) Bible
3. Large : Enormous :: ?
 (A) Cat : Tiger
 (B) Warmth : Frost
 (C) Plump : Fat
 (D) Royal : Regale
4. BC : DI :: DE : ?
 (A) PY (B) FP
 (C) EI (D) RU
5. ACE : KIG :: MOQ : ?
 (A) WUS (B) WVU
 (C) WVT (D) WUT
6. DCEF : WXVU :: KJLM : ?
 (A) QPRS (B) STRQ
 (C) PQNO (D) NMKL
7. 3 : 27 :: 7 : ?
 (A) 21 (B) 42
 (C) 147 (D) 343

8. 9 : 28 :: 56 : ?
 (A) 3 (B) 18
 (C) 112 (D) 169
9. 12 : 35 :: 16 : ?
 (A) 78 (B) 32
 (C) 55 (D) 63

Directions : In questions no. 10 to 18, select the one which is different from the other three responses.

10. (A) River (B) Ocean
 (C) Lake (D) Rain
11. (A) King (B) Queen
 (C) Royal (D) Prince
12. (A) Mango (B) Apple
 (C) Orange (D) Guava
13. (A) M (B) N
 (C) O (D) P
14. (A) GLOV (B) CFKR
 (C) ILQX (D) ADIP
15. (A) GOD (B) RAT
 (C) WAR (D) PAPER
16. (A) 363 (B) 484
 (C) 1331 (D) 5462
17. (A) 8 - 64 (B) 6 - 36
 (C) 9 - 81 (D) 7 - 50
18. (A) 121 - 196 (B) 144 - 225
 (C) 36 - 83 (D) 16 - 49
19. Amongst the following words, which word appears second in order in the English dictionary ?
 (A) Complaint (B) Complication
 (C) Complement (D) Compose

Directions : In questions no. 20 and 21, which one of the given responses would be a meaningful order of the following words in ascending order ?

20. 1. Line 2. Angle
 3. Square 4. Triangle
 (A) 2, 1, 4, 3 (B) 3, 4, 1, 2
 (C) 4, 2, 1, 3 (D) 1, 2, 4, 3
21. 1. Childhood 2. Adulthood
 3. Infancy 4. Adolescence
 5. Babyhood
 (A) 4, 1, 3, 2, 5 (B) 3, 5, 1, 4, 2
 (C) 2, 5, 1, 4, 3 (D) 5, 4, 2, 3, 1

22. Which one set of letters when sequentially placed at the gaps in the given letter series shall complete it ?

- L_NOO_ML_MNO_NML
 (A) MNLO (B) ONML
 (C) NLMO (D) LOMN

Directions : In questions no. 23 to 26, choose the correct alternative from the given ones that will complete the series.

23. AD, EH, IL, , QT
 (A) LM (B) MN
 (C) MP (D) OM
24. ABCD, IJKL, QRST,
 (A) YZAB (B) ABYZ
 (C) BAZY (D) YAZB
25. 2, 6, 14, 26, , 62
 (A) 52 (B) 54
 (C) 44 (D) 42
26. 6, 12, 21, 33,
 (A) 45 (B) 48
 (C) 40 (D) 46

27. Find the **wrong** number in the given series.

- 13, 24, 29, 39, 44, 54, 61, 69
 (A) 61 (B) 13
 (C) 44 (D) 24

28. P and Q are brothers. R and S are sisters. P's son is S's brother. How is Q related to R ?

- (A) Uncle (B) Brother
 (C) Father (D) Grandfather

29. There are five friends - Satish, Kishore, Mohan, Anil and Rajesh. Mohan is the tallest. Satish is shorter than Kishore but taller than Rajesh. Anil is little shorter than Kishore but little taller than Satish. Who is taller than Rajesh but shorter than Anil ?

- (A) Anil (B) Kishore
 (C) Rajesh (D) Satish

30. From the given alternatives select the word which **cannot** be formed using the letters of the given word.

COLLABORATION

- (A) ACTION (B) BILL
 (C) BORN (D) CRITERION

31. A group of alphabets are given with each being assigned a number. These have to be unscrambled into a meaningful word and correct order of letters may be indicated from the given responses.

E F N R A C
 1 2 3 4 5 6

- (A) 136452 (B) 245361
 (C) 415623 (D) 645312

32. If TIMBER is written as BERMIT in a certain code, how would BANTER be written in that code ?

- (A) RETNAB (B) TERNAB
(C) TENBAR (D) TABNER

33. If UNIVERSITY is 1273948756, how can TRUSTY be written in that code ?

- (A) 542856 (B) 531856
(C) 541856 (D) 541956

34. Which interchange of signs will make the following equation correct ?

$$35 + 7 \times 5 \div 5 - 6 = 24$$

- (A) \times and $-$ (B) $+$ and \times
(C) \div and $+$ (D) $-$ and \div

35. Select the correct combination of mathematical signs to replace * signs and to balance the given equation.

$$8 * 5 * 2 * 72 * 4$$

- (A) $= \times + \div$ (B) $\times = + \div$
(C) $\times + = \div$ (D) $+ \times = \div$

36. Some equations are solved on the basis of a certain system. On the same basis, find out the correct answer for the unsolved equation.

$$3 \times 8 \times 2 = 832, \quad 6 \times 4 \times 1 = 461,$$

$$8 \times 6 \times 1 = ?$$

- (A) 238 (B) 816
(C) 146 (D) 681

Directions : In questions no. 37 & 38, select the missing number from the given responses.

37. 27 9 3
 4 16 64
 512 ? 8

- (A) 64 (B) 2
(C) 16 (D) 8

38. 5 3 7 1
 7 5 9 3
 4 4 4 4
 3 2 ? 1

- (A) 6 (B) 5
(C) 4 (D) 2

39. 'A' starts walking towards North, turns left, again turns left, turns right, again turns right, once again turns left. In which direction is 'A' walking now ?

- (A) East (B) South
(C) West (D) South-East

40. Ram walked 4 km West of his house and then turned to South covering 8 km. Finally he moves 6 km towards East and then again 2 km West. How far is he from his initial position ?

- (A) 4 km (B) 8 km
(C) 10 km (D) 12 km

41. A, B, C, D and E are standing in a line facing North. E is standing 40 metres left to B. A is standing 20 metres left to C. D is standing 20 metres right to E and 50 metres right to C. What is the distance between A and D ?

- (A) 50 metres (B) 60 metres
(C) 70 metres (D) 80 metres

42. A solid cube of 4 inches has been painted red, green and black on pairs of opposite faces. It has been cut into one inch cubes. How many cubes have only three faces painted ?

- (A) 4 (B) 8
(C) 12 (D) 16

43. Two statements are given followed by two conclusions I and II. You have to consider the statements to be true even if they seem to be at variance from commonly known facts. You are to decide which of the given conclusions, if any, follow from the given statements. Indicate your answer.

Statements :

1. AIDS is a killer disease.
2. It is easy to prevent AIDS than to treat it.

Conclusions :

- I. AIDS prevention is very expensive.
- II. People will not cooperate for AIDS prevention.

- (A) Only conclusion I follows
(B) Only conclusion II follows
(C) Neither conclusion I nor II follows
(D) Both conclusions I and II follow

44. Two statements are given followed by four conclusions I, II, III and IV. You have to consider the statements to be true even if they seem to be at variance from commonly known facts. You are to decide which of the given conclusions, if any, follow from the given statements. Indicate your answer.

Statements :

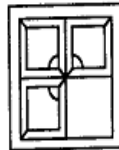
1. All pens are pencils.
2. No pencil is monkey.

Conclusions :

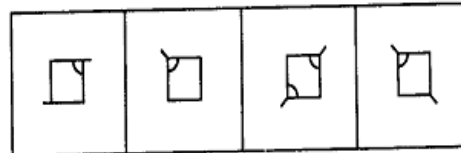
- I. No pen is monkey.
 - II. Some pens are monkeys.
 - III. All monkeys are pens.
 - IV. Some monkeys are pens.
- (A) Either conclusion II or III follows
(B) Either conclusion II or IV follows
(C) Only conclusion I follows
(D) All conclusions follow

45. Which answer figure will complete the pattern in the question figure ?

Question figure :



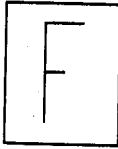
Answer figures :



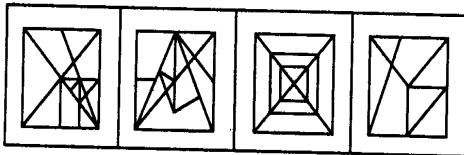
- (A) (B) (C) (D)

46. Select the answer figure in which the question figure is hidden/embedded.

Question figure :



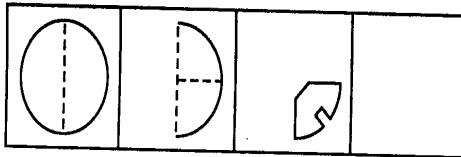
Answer figures :



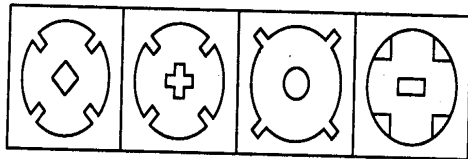
(A) (B) (C) (D)

47. A piece of paper is folded and cut as shown below in the question figures. From the given answer figures, indicate how it will appear when opened ?

Question figures :



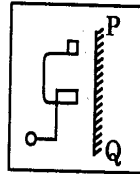
Answer figures :



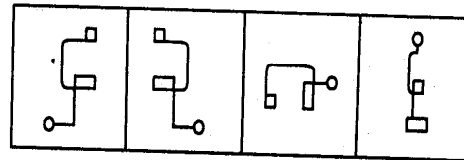
(A) (B) (C) (D)

48. Which of the answer figures is exactly the mirror image of the question figure, when the mirror is held on the line PQ ?

Question figure :

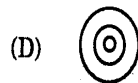
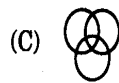


Answer figures :



(A) (B) (C) (D)

49. Which one of the following diagrams best depicts the relationship among Pigeons, Birds and Dogs ?



50. A word is represented by only one set of numbers as given in any one of the alternatives. The sets of numbers given in the alternatives are represented by two classes of alphabets as in two matrices given below. The columns and rows of matrix I are numbered from 0 to 4 and that of matrix II are numbered from 5 to 9. A letter from these matrices can be represented first by its row and next by its column, e.g., 'F' can be represented by 01, 13, 32, etc. and 'M' can be represented by 56, 68, 87, etc. Identify the set for the word NIFE.

	0	1	2	3	4
0	E	F	G	H	I
1	H	I	E	F	G
2	F	G	H	I	E
3	I	E	F	G	H
4	G	H	I	E	F

	5	6	7	8	9
5	L	M	N	O	P
6	O	P	L	M	N
7	M	N	O	P	L
8	P	L	M	N	O
9	N	O	P	L	M

- (A) 95, 30, 32, 43
- (B) 95, 30, 31, 43
- (C) 57, 42, 31, 43
- (D) 57, 41, 32, 43

**FOR VISUALLY HANDICAPPED
CANDIDATES ONLY**

45. If 5th of the month falls 2 days after Monday, what day of the week will be on the 18th of the month ?

- (A) Monday
- (B) Tuesday
- (C) Wednesday
- (D) Thursday

46. From amongst the given alternatives select the one which belongs to the same class to which the given three words belong :

Christians, Hindus, Muslims

- (A) Gujaratis
- (B) Sikhs
- (C) Tamilians
- (D) Bengalis

47. Mohan's age is 10 years less than half of his father's age who is 5 years older than his mother. If his mother is 35 years old, what is Mohan's age ?

- (A) 20 years
- (B) 15 years
- (C) 10 years
- (D) 5 years

48. Shyam ranks 15th in a class of 35 students. There are 5 students below Amit rankwise. How many students are there between Amit and Shyam ?

- (A) 20
- (B) 15
- (C) 14
- (D) 12

49. If A is 50 m North-West of B and C is 50 m North-East of B and D is 50 m South of B, then who is in East direction of A ?

- (A) A
- (B) B
- (C) C
- (D) D

50. A student divided a number by two when he was required to multiply it by 2. The answer he got was 2. What should have been the correct answer ?

- (A) $\frac{1}{4}$
- (B) 4
- (C) 6
- (D) 8

PART - II : ENGLISH LANGUAGE

Directions : In questions no. 51 to 55, some parts of the sentences have errors and some have none. Find out which part of a sentence has an error and blacken the rectangle [■] corresponding to the appropriate letter (A, B, C). If there is no error, blacken the rectangle [■] corresponding to (D) in the Answer Sheet.

51. Neither of these two documents / support your claim / on the property. / No error.
 (A) (B) (C) (D)
52. Get this book / be published / in time. / No error.
 (A) (B) (C) (D)
53. He / is junior than / all his friends. / No error.
 (A) (B) (C) (D)
54. Had you / worked hard / you will have passed. / No error.
 (A) (B) (C) (D)
55. He works hardly / to make / both ends meet. / No error.
 (A) (B) (C) (D)

Directions : In questions no. 56 to 60, sentences are given with blanks to be filled in with an appropriate word(s). Four alternatives are suggested for each question. Choose the correct alternative out of the four and mark it in the Answer Sheet.

- | | |
|---|--|
| <p>56. Have you got any idea as to what has happened to Akila ? I haven't seen her _____.</p> <p>(A) lately (B) later on
(C) late (D) later</p> | <p>58. _____ of defence personnel would be given transfers to their place of choice.</p> <p>(A) friends (B) wives
(C) husbands (D) spouses</p> |
| <p>57. I _____ hard to establish the validity of the theory from morning.</p> <p>(A) have been trying
(B) had tried
(C) tried
(D) am trying</p> | <p>59. Sachin was standing _____ me.</p> <p>(A) aside (B) next
(C) beside (D) besides</p> |
| | <p>60. My sister and _____ are pleased to accept your invitation.</p> <p>(A) I (B) me
(C) myself (D) I myself</p> |