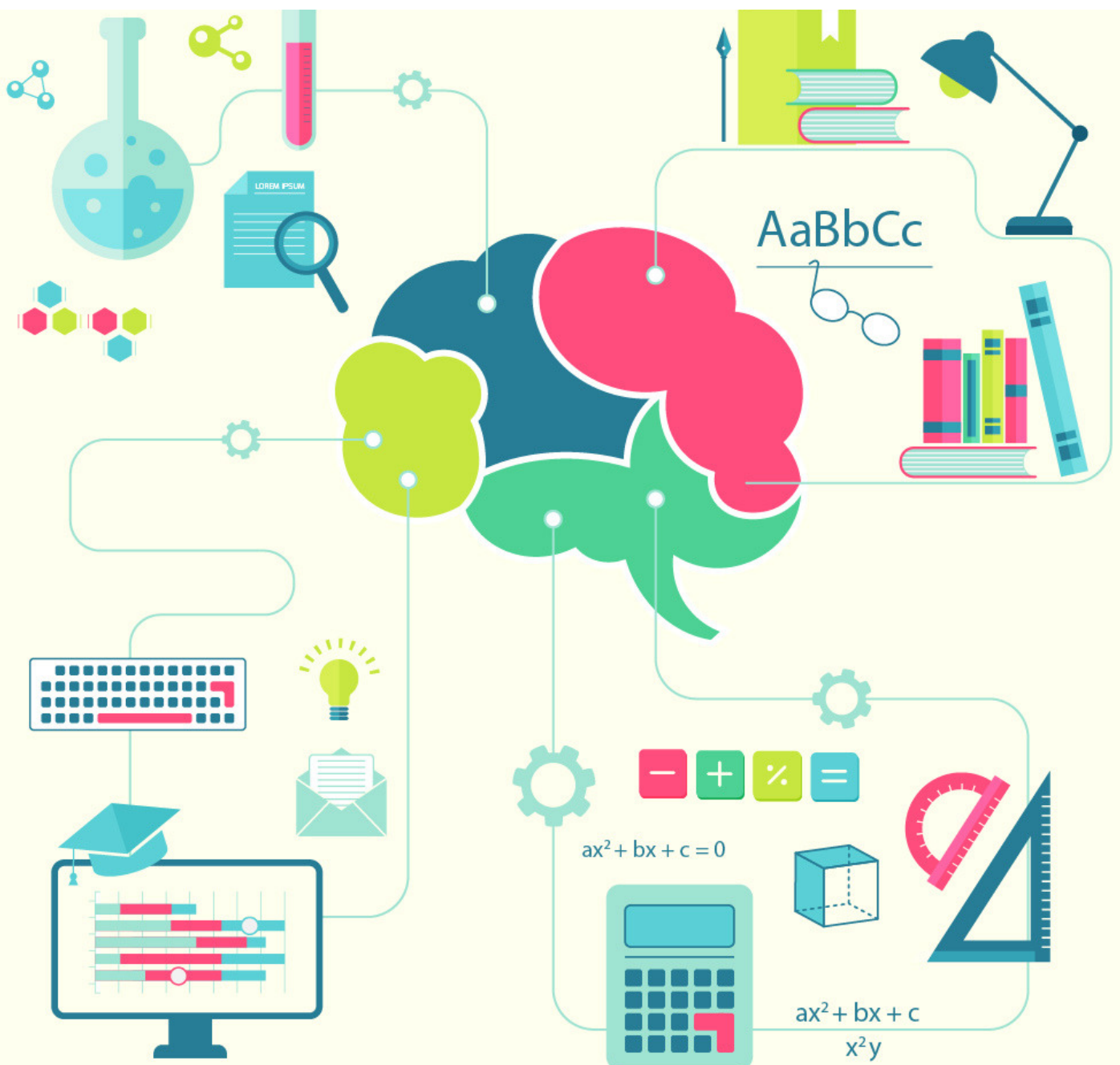


cracku 

# IBPS Clerk English Questions With Answers PDF

3 Nov 2017





# TAKE CRACKU'S FREE IBPS CLERK MOCK

## Instructions:

Rearrange the following sentences (A), (B), (C), (D), (E) and (F) to make a meaningful paragraph and then answer the questions which follow

- (A) While these disadvantages of bio fuels are serious, they are the only alternate energy source of the future and the sooner we find solutions to these problems the faster we will be able to solve the problems we are now facing with gasoline.
- (B) This fuel can also help to stimulate jobs locally since they are also much safer to handle than gasoline and can thus have the potential to turnaround a global economy.
- (C) These include dependence on fossil fuels for the machinery required to produce biofuel which ends up polluting as much as the burning of fossil fuels on roads and exorbitant cost of biofuels which makes it very difficult for the common man to switch to this option.
- (D) This turnaround can potentially help to bring world peace and end the need to depend on foreign countries for energy requirements.
- (E) Biofuels are made from plant sources and since these sources are available in abundance and can be reproduced on a massive scale they form an energy source that is potentially unlimited.
- (F) However everything is not as green with the biofuels as it seems as there are numerous disadvantages involved which at times overshadow their positive impact.

## Question 1:

Which of the following sentence should be the FIFTH after rearrangement ?

- a) A
- b) B
- c) C
- d) E
- e) F

IBPS Clerk 2016 Prelims Question Paper  
[Download PDF]

HIGHLY RATED BANKING APP





# SOLVE PAST IBPS CLERK PAPERS

## Question 2:

Which of the following sentence should be the THIRD after rearrangement ?

- a) A
- b) B
- c) C
- d) D
- e)E

## IBPS Clerk 2015 Prelims Question Paper Analysis

## Question 3:

Which of the following sentence should be the FIRST after rearrangement ?

- a) A
- b) B
- c) C
- d) D
- e) E

**DOWNLOAD APP for 100 Free  
Banking Tests**





## Question 4:

Which of the following sentence should be the SIXTH (LAST) after rearrangement ?

- a) A
- b) C
- c) D
- d) E
- e) F

## Question 5:

Which of the following sentence should be the SECOND after rearrangement ?

- a) A
- b) B
- c) D
- d) E
- e) F

Download PDF of  
IBPS Clerk Syllogism Questions

## Solutions: (1 to 5)

### 1) Answer (C)

The correct order of sentences is as follows: EBDFCA. E opens the paragraph with an introduction to biofuels. B talks about the advantages of these fuels. The use of the words "this turnaround" in sentence D is a reference to the turnaround talked about in sentence B. So, D follows B. The next sentence is F, which is followed by C and then A is the concluding statement.

So, statement C is the fifth sentence.



# SOLVE PAST IBPS CLERK PAPERS

## 2) Answer (D)

The correct order of sentences is as follows: EBDFCA. E opens the paragraph with an introduction to biofuels. B talks about the advantages of these fuels. The use of the words "this turnaround" in sentence D is a reference to the turnaround talked about in sentence B. So, D follows B. The next sentence is F, which is followed by C and then A is the concluding statement. D is the third sentence after rearrangement.

## 3) Answer (E)

The correct order of sentences is as follows: EBDFCA. E opens the paragraph with an introduction to biofuels. B talks about the advantages of these fuels. The use of the words "this turnaround" in sentence D is a reference to the turnaround talked about in sentence B. So, D follows B. The next sentence is F, which is followed by C and then A is the concluding statement. E is the first statement after rearrangement.

## IBPS Clerk Expected Cutoff 2017 State Wise

## 4) Answer (A)

The correct order of sentences is as follows: EBDFCA. E opens the paragraph with an introduction to biofuels. B talks about the advantages of these fuels. The use of the words "this turnaround" in sentence D is a reference to the turnaround talked about in sentence B. So, D follows B. The next sentence is F, which is followed by C and then A is the concluding statement. A is the last sentence after rearrangement.

## 5) Answer (B)

The correct order of sentences is as follows: EBDFCA. E opens the paragraph with an introduction to biofuels. B talks about the advantages of these fuels. The use of the words "this turnaround" in sentence D is a reference to the turnaround talked about in sentence B. So, D follows B. The next sentence is F, which is followed by C and then A is the concluding statement. B is the second sentence after rearrangement.

**DOWNLOAD APP for 100 Free  
Banking Tests**





# TAKE CRACKU'S FREE IBPS CLERK MOCK

## Instructions:

In each of the following questions four words are given of which two words are most nearly the same or opposite in meaning. Find the two words which are most nearly the same or opposite in meaning and indicate the number of the correct letter combination, by darkening the appropriate oval in your answer sheet.

### Question 6:

- (A) consent
  - (B) nascent
  - (C) emerging
  - (D) insecure
- 
- a) A - C
  - b) B - D
  - c) B - C
  - d) A - D
  - e) A - B

### Question 7:

- (A) elated
  - (B) eccentric
  - (C) explicit
  - (D) abnormal
- 
- a) A - B
  - b) B - D
  - c) A - C
  - d) A - D
  - e) D - C

## IBPS Clerk Salary After 7th pay Commission

HIGHLY RATED BANKING APP





**Question 8:**

- (A) abundance
  - (B) incomparable
  - (C) projection
  - (D) plethora
- 
- a) A - C
  - b) A - B
  - c) C - D
  - d) B - D
  - e) A - D

## Download PDF of Profit and Loss Questions

**Question 9:**

- (A) purposefully
  - (B) inaccurately
  - (C) inadvertently
  - (D) unchangeably
- 
- a) A - C
  - b) A - B
  - c) B - C
  - d) B - D
  - e) A - D



## Question 10:

- (A) germane  
(B) generate  
(C) reliable  
(D) irrelevant
- a) B - D  
b) B - C  
c) A - B  
d) C - D  
e) A - D

Free Computer Awareness Tests  
for IBPS Clerk Download the App

## Solutions: (6 to 10)

### 6) Answer (C)

The meaning of 'emerge' is 'move out and become visible'. The meaning of 'nascent' is 'just come into existence'. From the options, these two are the words that have the closest meaning. So, the correct answer is option c).

### 7) Answer (B)

The meaning of the word 'eccentric' is 'abnormal'. So, these two are the words that are closest in meaning from among the options. Option b) is the correct answer.

### 8) Answer (E)

The meaning of the word 'abundance' is 'in plenty'. 'Plethora' also means 'plenty'. So, these two are the words that are closest in meaning from the given options.

### 9) Answer (A)

'Purposefully' means to do something on purpose. 'Inadvertently' means to do something without intention. So, these two words are opposite in meaning to each other. So, option a) is the correct answer.

### 10) Answer (E)

The meaning of the word 'germane' is 'relevant to the subject under consideration'. This is the opposite of irrelevant. So, option e) is the correct answer.





SOLVE PAST IBPS CLERK PAPERS

Whatsapp 'Banking' to join in Banking Group to this number (7661025557)

IBPS Clerk Solved Previous Question Papers

IBPS Clerk 2015 Prelims Question Paper Analysis

HIGHLY RATED BANKING APP

