

**Post Basic B.Sc. Nursing**

**Student Handbook  
and  
Prospectus  
2013**

**Last date of Submission of Exam Form – 15<sup>th</sup> July, 2012**



***School of Health Sciences***  
**Indira Gandhi National Open University**  
**Maidan Garhi, New Delhi 110 068**

## RECOGNITION

IGNOU is a CENTRAL UNIVERSITY established by an Act of Parliament in 1985 (Act No. 50 of 1985). IGNOU Degrees/ Diplomas/ Certificates are recognised by all the member institutions of the Association of Indian Universities (AIU) and are at par with Degrees/ Diplomas/Certificates of all Indian Universities/Deemed Universities/ Institutions.

An electronic version of the Prospectus and Application Form is also available on the IGNOU website: <http://www.ignou.ac.in>

---

April, 2012

© Indira Gandhi National Open University, 2012

All rights reserved. No part of this work may be reproduced in any form, by mimeograph or any other means, without permission in writing from the Indira Gandhi National Open University.

*Further information about the School of Health Sciences and the Indira Gandhi National Open University courses may be obtained from the University's office at Maidan Garhi, New Delhi-110 068, India or its website <http://www.ignou.ac.in>*

Printed and published on behalf of the Indira Gandhi National Open University, New Delhi, by **Prof. T.K. Jena**, Director, School of Health Sciences, IGNOU, New Delhi.

Prepared by: Prof. Bimla Kapoor and Ms. Laxmi, SOHS, IGNOU.

Print Production: Shri T.R. Manoj, Assistant Registrar (P), School of Health Sciences, IGNOU, New Delhi-110068.

Laser Typeset by : Graphic Printers, Mayur Vihar, Phase-I, Delhi.

Printed at :

**Price : Rs. 500.00 by cash at the counter  
Rs. 550.00 by registered post**

# Contents

1.	<b>The University</b>	<b>5</b>
1.1	Introduction	5
1.2	Prominent Features	5
1.3	Important Achievements	5
1.4	The Schools of Studies & Centres	6
1.5	Academic Programmes	7
1.6	Course Preparation	8
1.7	Credit System	8
1.8	Support Services	8
1.9	Programme Delivery	8
2.	<b>School of Health Sciences</b>	<b>11</b>
3.	<b>Post Basic B.Sc. Nursng</b>	<b>12</b>
3.1	Academic Session	14
3.2	Admission	14
3.3	Eligibility	15
3.4	Age of Admission	15
3.5	Duration of the Programme	15
3.6	Medium of Instruction	15
3.7	Selection Procedure	15
3.8	Programme Fees	16
3.9	Programme Delivery	16
4.	<b>University Rules</b>	<b>16</b>
4.1	Educational Qualifications Awarded by Private Institutions	16
4.2	Validity of Degree for Admission	17
4.3	Incomplete and Late Applications	17
4.4	Validity of Admission	17
4.5	Re-admission	17
4.6	Reservation	17
4.7	Scholarships and Reimbursement of Fee	17
4.8	Refund of Fee	18
4.9	Study Material and Assignments	18
4.10	Simultaneous Registraion	18
4.11	Change/Correction of Address and Study Centres	18
4.12	Official Transcripts	18
4.13	Disputes on Admissions and Other University Matters	19
4.14	Term-End examinations	19
4.13	Recognition	20
	<b>Appendices I to XXV</b>	<b>25-70</b>

## PROGRAMME ON OFFER

### Post Basic B.Sc. Nursing

<i>Student Handbook and Prospectus</i> would be available at all Regional Centres. Student Handbook and Prospectus is also available on university's website <a href="http://www.ignou.ac.in">www.ignou.ac.in</a> . <b>The candidates downloading the Form from website are required to send a Demand Draft of ₹ 550/- (Rupees five hundred fifty only) drawn in favour of IGNOU payable at New Delhi.</b>	
Last date for submission of the Entrance Test form to The Registrar Student Evaluation Division (SED), Block No. 12 Indira Gandhi National Open University, Maidan Garhi, New Delhi-110068, <b>by registered/speed post.</b>	<b>15<sup>th</sup> July 2012</b> <b>(Also check website of IGNOU and advertisement)</b>
Date of Entrance Examination	<b>19<sup>th</sup> August, 2012</b> <b>(Also check website of IGNOU &amp; Advertisement)</b>
<b>IMPORTANT NOTES:</b> <ol style="list-style-type: none"><li><b>The Entrance Test application form has been provided in the Student Handbook and Prospectus for admission to the Programme for Jan 2013 Session. Please see the instructions for filling up the form.</b></li><li>Hall tickets will be provided to the candidates ten (10) days before the entrance test. In case of non-receipt of hall ticket three (03) days before the entrance test, candidates can download hall ticket from IGNOU website (<a href="http://www.ignou.ac.in">www.ignou.ac.in</a>) and report to the examination centre for appearing in the entrance test along with any I.D. proof.</li><li>Mere allowing candidate to take entrance test would not amount to acceptance of their eligibility for admission to the programme. The final admission shall be subject to their merit in the entrance test and also production of proof of their eligibility alongwith original certificates and programme fee.</li><li>National merit will be prepared as per OPENNET-II.</li><li>The selection procedure will be put up on the website of IGNOU website <a href="http://www.ignou.ac.in">http://www.ignou.ac.in</a></li></ol>	

---

# **1. THE UNIVERSITY**

---

## **1.1 Introduction**

The Indira Gandhi National Open University was established by an Act of Parliament in 1985 to achieve the following objectives:

- democratising higher education by taking it to the doorsteps of the learners
- providing access to high quality education to all those who seek it irrespective of age, region, religion and gender
- offering need-based academic programmes by giving professional and vocational orientation to the courses
- promoting and developing distance education in India
- setting and maintaining standards in distance education in the country as an apex body.

## **1.2 Prominent Features**

- Indira Gandhi National Open University has certain unique features such as:
- International Jurisdiction
- Flexible admission rules.
- Individualized study—flexibility in terms of place, pace and duration of study.
- Use of latest information and communication technologies.
- Nationwide student support services network.
- Cost-effective programmes.
- Modular approach to programmes.
- Resource sharing, collaborations and networking with conventional Universities, Open Universities and other Institutions/Organizations.
- Socially and academically relevant programmes based on students needs analysis. Convergence of open and conventional education systems.

## **1.3 Important Achievements**

- IGNOU is the First University in India to Launch Convergence as well as Community College Scheme.
- Emergence of IGNOU as the largest Open University in the World.
- Recognition as Centre of Excellence in Distance Education by the Commonwealth of Learning (1993).

- Award of Excellence for Distance Education Materials by Commonwealth of Learning (1999).
- Launch of a series of 24 hour Educational Channels 'Gyan Darshan'. IGNOU is the nodal agency for these channels and regular transmissions are done from the studio at EMPC, IGNOU.
- Student enrolment has doubled in four years from 1.5 million to over 3 million.
- UNESCO declared IGNOU as the largest institution of higher learning in the world in 2010.
- On spot delivery of study material to students.
- Largest network of learning support system.
- Declaration of Term-end result within 45 days.
- Increase in academic programme from 338 to 490 within a year.

## **1.4 The Schools of Studies and Centres**

With a view to develop interdisciplinary studies, the University operates through its Schools of Studies. Each School is headed by a Director who arranges to plan, supervise, develop and organise its academic programmes and courses in coordination with the School staff and different academic, administrative and service wings of the University. The emphasis is on providing a wide choice of courses at different levels. The following Schools of Studies currently are in operation:

- School of Humanities (SOH)
- School of Social Sciences (SOSS)
- School of Sciences (SOS)
- School of Education (SOE)
- School of Continuing Education (SOCE)
- School of Engineering and Technology (SOET)
- School of Management Studies (SOMS)
- School of Health Sciences (SOHS)
- School of Computer and Information Sciences (SOCIS)
- School of Agriculture (SOA)
- School of Law (SOL)
- School of Journalism and New Media Studies (SOJNMS)
- School of Gender and Development Studies (SOGDS)
- School of Tourism and Hospitality Service Management (SOTHSM)

- School of Interdisciplinary and Trans-disciplinary Studies (SOITS)
- School of Social Work (SOSW)
- School of Vocational Education and Training (SOVET)
- School of Extension and Development Studies (SOEDS)
- School of Foreign Languages (SOFL)
- School of Translation Studies and Training (SOTST)
- School of Performing and Visual Arts (SOPVA)

Some of the other Centres and Units which in coordination with the academic, administrative and service wings have developed very useful and educative courses/programmes, are as follows.

- National Centre for Disability Studies (NCDS)
- Centre for Corporate Education, Training and Consultancy (CCETC)
- Centre for Extension Education (CEE)
- Advanced Centre for Informatics and Innovative Learning (ACIIL)
- Chair for Sustainable Development (CSD)
- National Centre for Innovations in Distance Education (NCIDE)
- Indian Sign Language Research & Training Centre (ISLRTC)

## **1.5 Academic Programmes**

The University offers both short-term and long-term programmes leading to Certificates, Diplomas, Undergraduate Degrees, Postgraduate Degrees and Doctoral Degrees, which are conventional as well as innovative. Most of these programmes have been developed after an initial survey of the demand for such programmes. These are launched with a view to fulfil the learner's needs for :

- Certification
- Improvement of skills
- Acquisition of professional qualifications
- Continuing education and professional development at work place
- Self-enrichment
- Diversification and updation of knowledge and
- Empowerment

## 1.6 Course Preparation

Learning material is specially prepared by teams of experts drawn from different Universities and specialized Institutions in the area as well as by in-house faculty. This material is scrutinized by the content experts, supervised by the instructors/unit designers and edited by the language experts at IGNOU before they are finally sent for printing. Similarly, audio and video programmes are produced in consultation with the course writers, in-house faculty and producers. The material is previewed and reviewed by the faculty as well as outside media experts and edited/modified, wherever necessary, before they are finally despatched to the Programme Study Centres and Telecast through Gyan Darshan.

## 1.7 Credit System

The University follows the 'Credit System' for most of its programmes. Each credit in our system is equivalent to 30 hours of student study comprising all learning activities (i.e. reading and comprehending the print material, listening to audio, watching video, attending counselling sessions, teleconference and writing assignment responses). Thus, a 4-credit course involves 120 hours of study. This helps the learner to know the academic effort he/she has to put in, to successfully complete a course. Completion of an academic programme (Degree or Diploma) requires successful completion of the assignments, practicals projects and the term-end examination of each course in a programme.

## 1.8 Support Services

In order to provide individualised support to its learners, the University has a large number of Study Centres, spread throughout the country. These Study Centres are coordinated by 60 Regional Centres and Recognised Regional Centres. At the Study Centres, the learners interact with the Academic Counsellors and other learners, refer to books in the Library, watch/listen to video/audio programmes and interact with the Coordinator on administrative and academic matters. The list of Regional and Study Centres is given in this handbook. Support services are also provided through Work Centres, Programme Study Centres, Skill Development Centres and Special Study Centres.

## 1.9 Programme Delivery

The methodology of instruction in this University is different from that of the conventional Universities. The open university system is more learner-oriented and the learner is an active participant in the pedagogical (teaching and learning) process. Most of the instructions are imparted through distance education methodology and face-to-face mode as per the requirement.

The University follows a multimedia approach for instruction, which comprises:

- a) **Self Instructional Written Material:** The printed study material (written in self instructional style) for both theory and practical components of the programmes is supplied to the learners for every course (on an average 1 block per credit). A block which comes in the form of a booklet usually comprises 3 to 5 units.
- b) **Audio-Visual Material Aids:** The learning package contains audio and video cassettes which have been produced by the University for better clarification and enhancement of understanding of the course material given to the learner. A video programme is normally of 25-30 minutes duration. The video cassettes are screened at the study centres during specific sessions which are duly notified for the benefit of the learners.



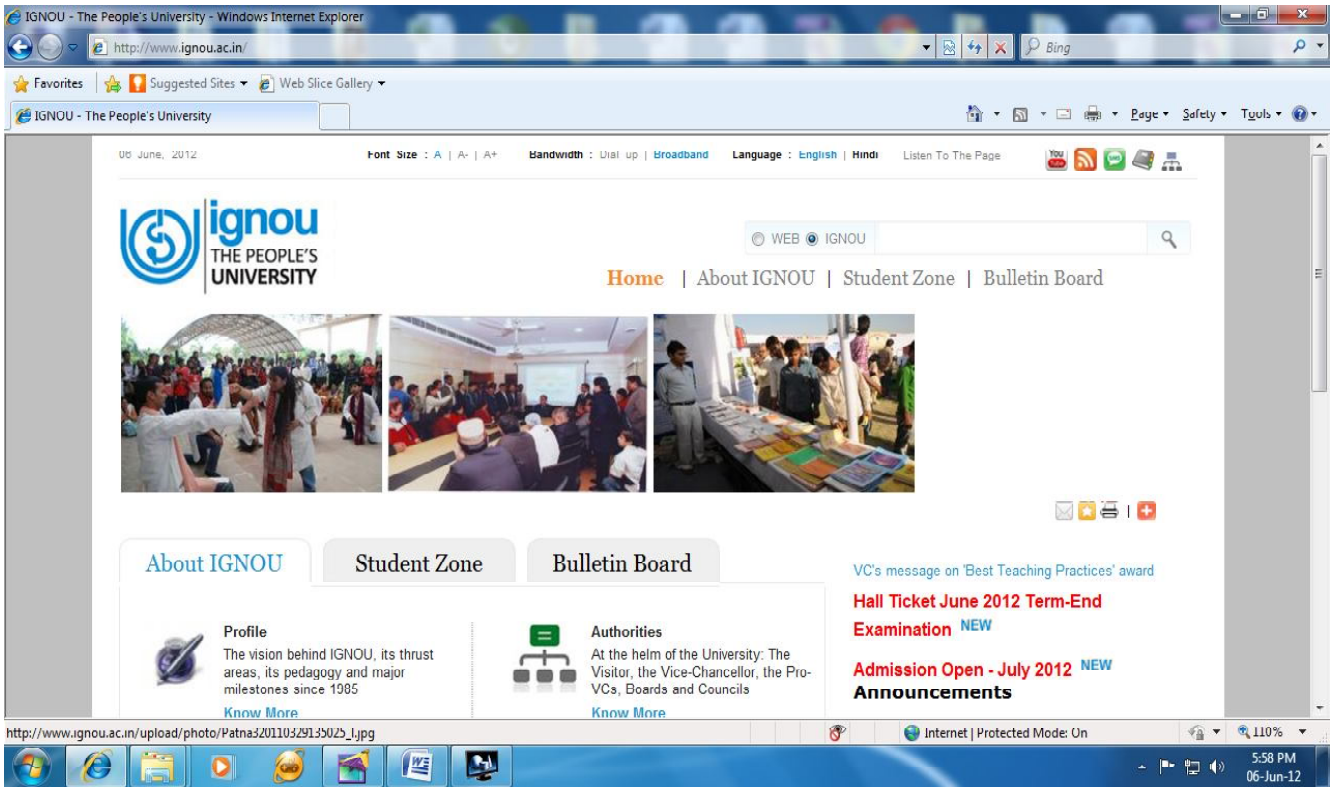
The video programmes are telecasted on National Network of Doordarshan and Gyan Darshan. All Gyan Vani stations are broadcasting curriculum based audio programmes. Some of the selected stations of All India Radio are also broadcasting the audio programmes. Learners can confirm the dates for the programmes from their study centres. The information is also provided through the National Newspapers, IGNOU Newsletters sent to the learners periodically and university website.

- c) **Counselling Sessions:** Normally Counselling sessions for theory are held as per schedule drawn by the Programme Study Centres. These are mostly held outside the regular working hours of the host institutions where the study centres are located. 75% attendance is compulsory in Post Basic B.Sc. Nursing Programme.
- d) **Teleconferences:** Live sessions are conducted via satellite through interactive Gyan Darshan Channel as well as simultaneously telecasted on Edusat channel from the University studios at Electronic Media Processing Centre (EMPC), the schedule of which is made available at the Programme Study Centres.
- e) **Practicals/Project Work:** Some Programme have practical components also. Practical are held at designated institutions for which schedule is provided by the Programme Study Centres 90% attendance for practicals is compulsory which are conducted in the specialized fields in hospitals and community under the supervision of Academic Counsellors/ Clinical Supervisors.

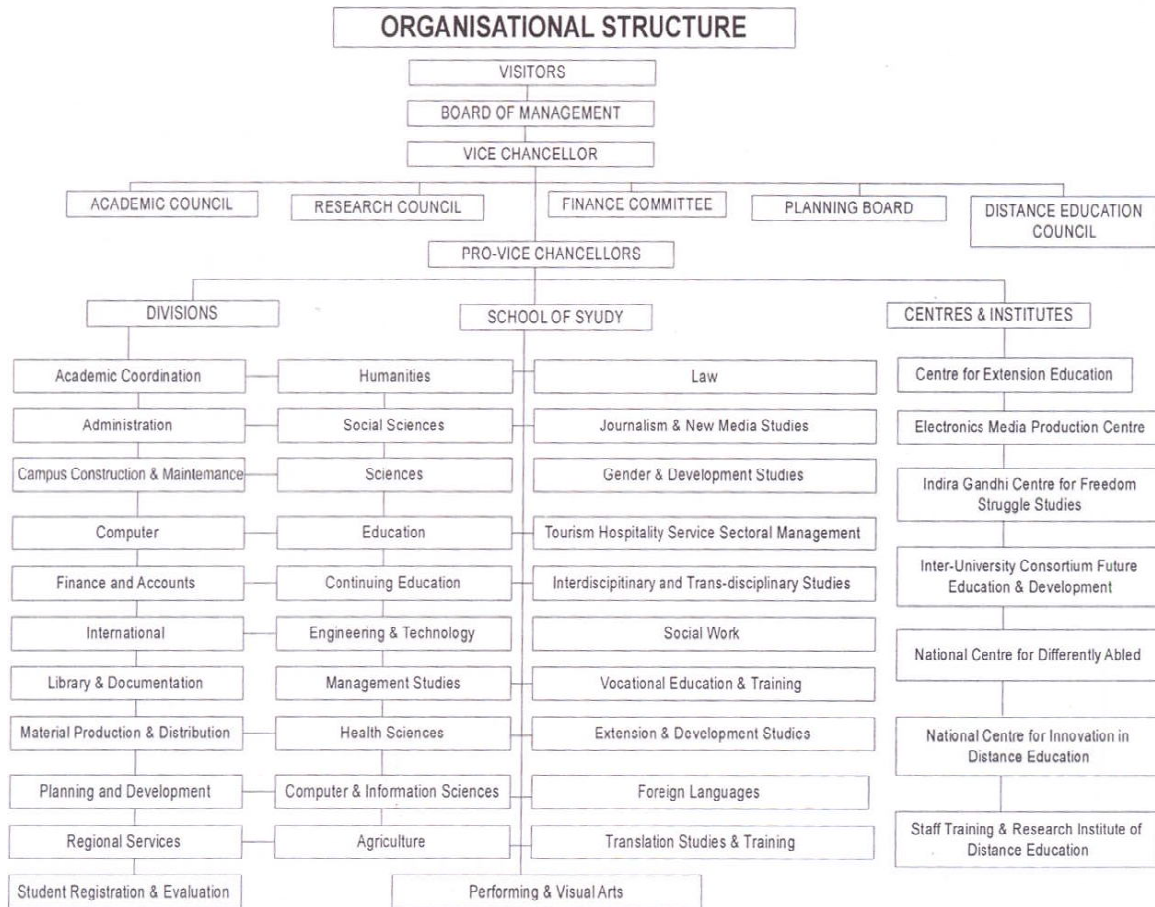
### IGNOU Website

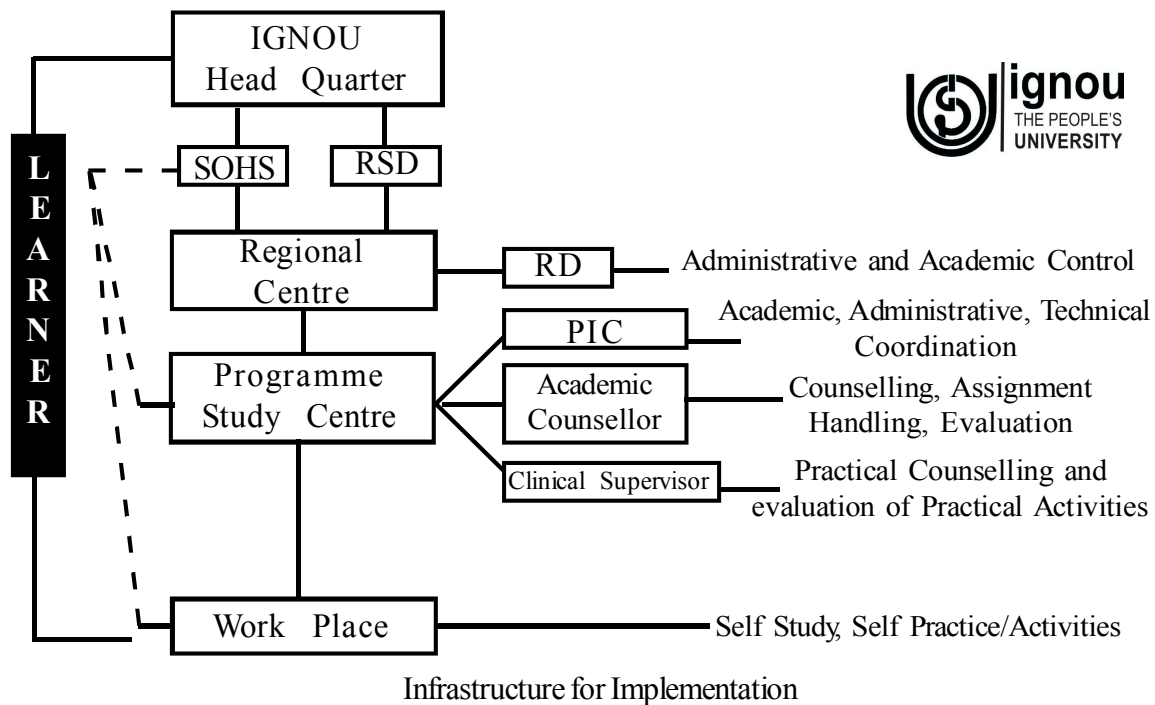
At Website: <http://ignou.ac.in>, the following useful information is available:

- Details of programmes on offer.
- Downloadable prospectus/application forms of various programmes.
- Address checking.
- Material despatch details.
- Assignment of current years.
- Term-end examination date-sheet.
- Catalogue of audio/video programme.
- Hall ticket details.
- Result and Grade Card of your term-end examinations.
- Previous years question papers.
- An update on the latest happenings at the University.
- Programme schedules of Gyan Darshan, Gyan Vani and EDUSAT.
- List of study centres and regional centres.



Web page of IGNOU Website





## 2. SCHOOL OF HEALTH SCIENCES

The School of Health Sciences (SOHS) was set up with the objective of augmenting educational avenues and for providing in-service training for medical, nursing, paramedical and allied personnel through the distance education mode.

The School is pioneer in developing competency-based programmes in various disciplines of Health Sciences. Innovative approach in Nursing and Medical programmes include hands-on training which is provided through diversified approach of a network of colleges and district level hospitals. The programmes in nursing and health sciences are being developed so as to revolutionize career opportunities available to nursing and medical personnels.

To achieve this, the School is collaborating and exchanging ideas with various national and international organizations like World Health Organization (WHO), United Nations Children's Fund (UNICEF), Ministry of Health and Family Welfare (MoHFW), Dental Council of India (DCI), Voluntary Organizations like Narayana Hrudayalaya, Trained Nurses Association of India (TNAI), INC, Nepal Nursing Council and Partner Institute at DOHA.

### Ongoing Programmes

- Ph.D Programme in Nursing
- Post Doctoral Certificate in Dialysis Medicine.
- Post Basic Bachelor of Sciences in Nursing (B.Sc.N) (PB)
- B.Sc ( Hons.) in Optometry and Ophthalmic Techniques
- Post Graduate Diploma in Maternal and Child Health ( PGDMCH )
- Post Graduate Diploma in Hospital and Health Management (PGDHMM )
- Post Graduate Diploma in Geriatric Medicine (PGDGM)

- Post Graduate Diploma in Clinical Cardiology (PGDCC)
- PG Diploma in Acupuncture (PGDACP)
- Post Graduate Diploma in HIV Medicine (PGDHIVM)
- Post Graduate Diploma in Bio-ethics
- Diploma in Nursing Administration (DNA)
- Diploma in Critical Care Nursing (DCCN)
- Post Graduate Certificate in Oral Implantology (PGCOI)
- Post Graduate Certificate in Endodontics (PGCE)
- Certificate in Health Care Waste Management for South-East Asian Countries (CHCWM)
- Certificate in Maternal and Child Health Care (CMCHC)
- Certificate in Newborn and Infant Care (CNIC)
- Certificate in Diabetes Care for Community Worker (CDCW)
- Certificate in Home Based Health Care (CHBHC)
- Certificate in Adolescent Health and Counselling (CAHC)
- Certificate in AYUSH Nursing (Ayurveda) (CAY)

---

### **3. POST BASIC B.SC. NURSING**

---

The preparation and launching of Post Basic B.Sc. Nursing degree programme has been agreed upon by IGNOU, at the request of Indian Nursing Council. The need for this was felt as the current pace of providing higher education to working nurses is very slow due to shortage of Colleges of Nursing and paucity of seats available in each. As per the New National Policy of Education, the emphasis is on the need for making higher education available within the reach of all. Launching of Post Basic B.Sc. Nursing Programme through Open University will meet its objectives. Further, it will also contribute towards the growth of nursing profession, promote Nation's idea of accelerating women's education and uplifting the expanded and extended role of the nursing personnel. The development of this programme has been undertaken with the involvement of nursing experts, scientists and educationists from related disciplines all over the country.

#### **Programme Objectives**

The main objectives of the programme are as follows:

- Provide opportunity to a large segment of in-service nurses to upgrade their knowledge and skills to respond to the changing health needs of the society.
- Motivate nurses to maintain clinical competence to provide quality care.
- Develop teaching, administration and research skills.
- Promote personal and professional growth for better opportunities.

#### **Programme Structure**

The University follows the credit system for its various Degree programmes. Each credit amounts to 30 hours of study comprising all learning activities. Thus a four credit course involves 120 study hours and an eight credit course involves 240 study hours. To complete the Post Basic B.Sc. Nursing Programme successfully, student will have to earn 108 credits over a period of 3 to 5 years depending on her/his convenience.

The Post Basic Bachelor of Science in Nursing is a three year Degree programme. This course has two major components: theory and practicals. It is divided into 22 courses; 11 theory and 11 practical.

1) **Theory Courses : 40 Credits**

First Year : 18

Second Year : 10

Third Year : 12

2) **Practical Courses : 68 Credits**

First Year : 18

Second Year : 26

Third Year : 24

All the courses are compulsory for the students who want to obtain Post Basic B.Sc. Nursing Degree.

One Credit is 30 Student's Study hours.

**List of Theory Courses**

Year	Title	Course Code	Credits	No. of Blocks	No of Assignments	Counselling Sessions (Hours)	Self Study (Hours)
<b>1st Year</b>	Nursing Foundation	BNS- 101	4	4	2	24	96
	Applied Sciences	BNS-102	4	5	2	15	105
	Maternal Nursing	BNS-103	2	2	1	12	48
	Communicative English	BNS-104	4	4	2	12	108
	Behavioural Sciences	BNS-105	4	4	2	24	96
	<b>Total</b>		<b>18</b>	<b>19</b>	<b>9</b>	<b>87</b>	<b>453</b>
<b>2nd Year</b>	Medical Surgical Nursing	BNS-106	4	4	2	24	96
	Paediatric Nursing	BNS-107	2	3	1	12	48
	Mental Health Nursing	BNS-108	2	4	2	24	96
	<b>Total</b>		<b>10</b>	<b>11</b>	<b>5</b>	<b>60</b>	<b>240</b>
<b>3rd Year</b>	Community Health Nursing	BNS-109	4	4	2	24	96
	Nursing Administration	BNS-110	4	4	2	24	96
	Nursing Education and Reserch	BNS-111	4	4	2	24	96
	<b>Total</b>		<b>12</b>	<b>12</b>	<b>6</b>	<b>72</b>	<b>288</b>
	<b>Grand Total</b>		<b>40</b>	<b>42</b>	<b>20</b>	<b>219</b>	<b>981</b>

**Total Hours of Theory and Self Study: 219+981=1200**

## List of Practical Courses

Year	Title	Course Code	Credits	No. of Blocks	Practical Contact Sessions (Hours)	Self Study Activities (Hours)
<b>1st Year</b>	Nursing Foundation	BNSL-101	4	1	60	60
	Applied Sciences	BNSL-102	4	4	112	08
	Maternal Nursing	BNSL-103	8	4	120	120
	Behavioural Sciences	BNSL-105	2	1	30	30
	<b>Total</b>			<b>18</b>	<b>11</b>	<b>322</b>
<b>2nd Year</b>	Medical Surgical Nursing	BNSL-106	10	2	150	150
	Paediatric Nursing	BNSL-107	8	2	120	120
	Mental Health Nursing	BNSL-108	8	2	120	120
	<b>Total</b>			<b>26</b>	<b>6</b>	<b>390</b>
<b>3rd Year</b>	Community Health Nursing	BNSL-109	8	2	120	120
	Nursing Administration	BNSL-110	6	2	90	90
	Nursing Education and Reserch	BNSL-111	8	2	120	120
	Computer in Nursing	BNSL-112	2	2	30	30
	<b>Total</b>			<b>24</b>	<b>8</b>	<b>360</b>
<b>Grand Total</b>			<b>68</b>	<b>24</b>	<b>1072</b>	<b>968</b>

**Total Hours of Self Activities and Practical Contact Sessions : 968+1072=2040**

**The practical contact sessions will be held in hospital and community in respective area under the supervision of clinical teachers/Academic Counsellors.**

*Note : One credits is 30 study hours.*

### 3.1 Academic Session

The Programme commences from January of every year.

### 3.2 Admission

**The admission will be made once a year for in-service nurses.** The applications should be submitted on prescribed form so as to reach IGNOU before the due date. The application form can also be downloaded from the IGNOU website [www.ignou.ac.in](http://www.ignou.ac.in).

Admissions will be done through an **Entrance Test** for the Post Basic B.Sc. Nursing programme on the basis of merit. Reservation policy as per Govt. of India/IGNOU will be followed. Regional center will allot the Programme Study Centre (PSC) to the student as per the number of seats allocated to each PSC. **Tentative list of programme study centres for Post Basic B.Sc. Nursing, PSC and RC code may be referred in Appendix-V&VI. The number of PSC will be added as and when the PSC are inspected and approved by INC.**

### 3.3 Eligibility

10+2 with three years Diploma in General Nursing and Midwifery (GNM) with minimum of **two years experience in the profession. Candidate should be in service.** (For male nurses or nurses who have not done midwifery in the GNM programme should have a certificate in any of the nursing courses of 6-9 months duration prescribed by the Indian Nursing Council in lieu of midwifery.)

OR

10th class (Matriculation) or its equivalent with three years Diploma in General Nursing and Midwifery (GNM) with minimum of **five years experience in the profession. Candidate should be in service.** (For male nurses or nurses who have not done midwifery in the GNM Programme should have a certificate in any of the nursing courses of 6-9 months duration prescribed by the Indian Nursing Council in lieu of midwifery.)

### 3.4 Age of Admission

There is no maximum age limit.

### 3.5 Duration of Programme

The minimum duration of the programme is three years. However, the students are given a maximum period of five years to complete the programme from the date of registration. After which the student have to apply for readmission paying the prorata fee for each incomplete course of theory.

### 3.6 Medium of Instruction

English

### 3.7 Selection Procedure

The selection will be done on the basis of entrance test for Post Basic B.Sc. Nursing programme. The selection procedure will be put up on the website of IGNOU after the OPENNET-II.

**The candidates who are offered admission are required to deposit the programme fee and show their original certificates to the Regional Director to confirm their admission.** Details regarding the above can also be obtained time to time from the IGNOU website [www.ignou.ac.in](http://www.ignou.ac.in) in school, School of Health Sciences, 'whats new' or phone 29533078, 29532965 or 29572815, 29572846.

A sample of the questions in the Entrance Examination is provided in Appendix X. There will be 120 questions in the entrance examination. The questions will be drawn from 9 to 11 subjects which are taught in GNM. The entrance examination will be of 2½ Hours duration and consist of 120 Multiple Choice Questions. **Candidates will get OMR sheet for marking the response.**

**A cut off at 50% of the total marks of entrance exam is kept for selecting the general candidates in the merit list and 45% for SC, ST and OBC (Non creamy layer) candidates.**

### 3.8 Programme Fees

Programme Fee — Rs. 13,200/- per annum which is subject to change.

Candidate seeking admission to Post Basic B.Sc. Nursing Programme are advised not to pay the fees along with the filled-in application form. They will get a separate communication about their admission and for payment of programme fee.

The programme fee should be paid only by Demand Draft drawn in the favour of IGNOU and payable at the city where your regional centre is situated. **On the back of Demand Draft write your name, address and telephone number to ensure proper credit to your account.** Admission Fee deposited will not be refunded.

### 3.9 Programme Delivery

The programme is implemented through a network of Programme Study Centres (PSCs) all over the country. These PSCs are located in recognized colleges of nursing by INC and State Nursing Council.

Face-to-face Academic Counselling is conducted at PSC by Academic Counsellors and Practicals are supervised by Academic Counsellors attached to the PSC in the clinical area and community field (Academic Counsellors and Clinical Supervisors are teachers who teach in Colleges of Nursing). In addition to theory, students also carry on self-activities at their workplace and maintain records as given in practical blocks.

For the practical hands on training the students will be posted in the hospital and community field attached with a Programme Study Centre. A maximum of 30 students will be attached to a programme study centre. The students are required to undergo compulsory contact sessions. Theory Counselling and Practical Sessions are held 8 hours per day. **Supervised activities needs to be completed under the supervision of clinical supervisors whereas self activities are carried out at work place of the student.**

There are 52 days (409 hours) of theory counselling and practical contact sessions in the first year to be conducted at colleges of nursing, hospital and community under supervision. However, 84 days (671 hours) student would require to do the self study and self activities as per guidelines which will be part of continuous evaluation.

There are 56 days (450 hours) of theory counselling and practical contact sessions in the second year to be conducted at colleges of nursing, hospitals and community under supervision. However, 79 dyas (630 hours) studnet would require to do the self study and self activities as per guidelines which will be part of continuous evaluation.

There are 54 days (432 hours) of theory counselling and practical contact sessions in the third year to be conducted at colleges of nursing, hospitals and community under supervision. However, 81 dyas (648 hours) studnet would require to do the self study and self activities as per guidelines which will be part of continuous evaluation. The spells for practicals are given in Appendix VII, VIII and IX.

---

## 4. UNIVERSITY RULES

---

The University reserves the right to change the rules from time to time. However, latest rules will be applicable to all the students irrespective of the year of their registration.

### 4.1 Educational Qualifications Awarded By Private Institutions

Any educational qualification awarded by the Private Universities established under the provisions of the “*Chhattisgarh Niji Kshetra Vishwavidyalaya (Sathapana a Aur Viniam), Adhiniyam, 2002*” are non-existent and cannot be considered for admission any of programme in IGNOU.



## **4.2 Validity of Degree for Admission**

Master's Degree awarded without a first degree is not recognised for purposes of admission to IGNOU's Academic Programmes.

## **4.3 Incomplete and Late Applications**

Incomplete Application Form(s)/Re-registration Form(s), received after due date or having wrong options of courses or electives or false information, will be summarily rejected without any intimation to the learners. The learners are, therefore, advised to fill up the relevant columns carefully and enclosed copies of all the required certificates duly attested by a Gazetted Officer. The Admission Form duly completed along with its enclosures is to be submitted to the Regional Director concerned ONLY on or before the due date. The application form sent to other offices of the University will not be considered and the applicant will have no claim, whatsoever, on account of this.

## **4.4 Validity of Admission**

Learners offered admission have to join on or before the due dates specified by the University. In case they want to seek admission for the next session, they have to apply afresh and go through the admission process again.

## **4.5 Re-admission**

The students who are not able to clear their programme within the maximum duration can take re-admission for additional period in continuation of the earlier period as under:

For re-admission the student has to make pro-rata fee for each incomplete course. The details of pro-rata fee and the Re-admission Form is available at the Regional Centres and also in the Website for the courses which they have not been able to complete. For further details, please see the website. The students who fail to pay the prescribed full programme fee during the maximum duration of the Programmes shall have to pay full fee for the missed years in addition to pro-rata course fee for re-admission.

## **4.6 Reservation**

The University provides reservation of seats for Scheduled Castes, Scheduled Tribes, non-creamy layer of OBC, War Widows, Kashmiri Migrants and Physically Handicapped learners, as per the Government of India rules, for admission to its various programmes. However, submission of forged certificate under any category shall lead not only cancellation of admission but also be legally implicated as per Govt. of India rules.

## **4.7 Scholarships and Reimbursement of Fee**

The learners belonging to reserved Categories, viz. Scheduled Castes, Scheduled Tribes and Physically Handicapped have to pay the full fee at the time of admission to the University along with other general category candidates.

The learners belonging to above categories admitted to IGNOU Programme(s) are eligible for Government of India Scholarships. They are advised to collect Scholarship from the Directorate of Social Welfare or from the Office of the Social Welfare Officer, of their State, fill it up and submit the duly completed Scholarship Form to the Regional Director at the Regional Centre (where he/she stand admitted/registered for the programme, he/she applied for admission) for necessary certification by the Regional Director. After the above

certification, the Scholarship Form be collected from the Regional Centre and re-submitted at the office of the Social Welfare Officer or Directorate of Social Welfare in their State, as the case may be, for scholarship or reimbursement of Programme Fee. Scholarship scheme of National Centre for Promotion of Employment of Disabled People (NCPEDP) for Post Graduate level programmes is applicable to the students of this University also. Such students are advised to apply to awarding authority.

## **4.8 Refund of Fee**

Fee once paid will not be refunded under any circumstances. It is also not adjustable against any other programme of this University. However in cases where University denies admission, the programme fee will be refunded after deduction of registration fee through A/c Payee Cheque Only.

## **4.9 Study Material and Assignments**

The University sends study materials and assignments, wherever prescribed, to the students through Regional Centres or by registered post and if a student does not receive the same for any reason whatsoever, the University shall not be held responsible for that. In case a student wants to have assignments, she can obtain a copy of the same from the Study Centre or Regional Centre or may download it from the IGNOU website [www.ignou.ac.in](http://www.ignou.ac.in). In case non-receipt of study material students are required to write to concerned Regional Centre of IGNOU.

## **4.10 Simultaneous Registration**

Students who are already enrolled in a programme of one year or longer duration can also simultaneously register themselves for any certificate programme of 6 months duration. However, if there is any clash of dates of counselling or examination schedule between the two programmes taken, University will not be in a position to make adjustment.

## **4.11 Change/Correction of Address and Study Centres**

There is a printed card for change/correction of address and change of study centre which is dispatched along with the study material. In case there is any correction/change in the address, the learners are advised to make use of proforma provided in the Programme Guide and send it to the Regional Director concerned who will forward the request after verifying the student's signature to SR Division, Maidan Garhi, New Delhi-110 068. Requests received directly at SRD, New Delhi will not be entertained. The form for change of address can also be downloaded from IGNOU website: [www.ignou.ac.in](http://www.ignou.ac.in). Learners are advised not to write letters to any other officer in the University in this regard. Normally, it takes 4-6 weeks to effect the change. Therefore, the learners are advised to make their own arrangements to redirect the mail to the changed address during this period. In case a change of Study Centre is desired, the learners are advised to fill the proforma and address it to the Regional Centre concerned. Since counselling facilities are not available for all Programmes at all the centres. Learners are advised to make sure that counselling facilities are available, for the subject he/she has chosen, at the new centre opted for. Request for change of Study Centre is normally accepted subject to availability of seat for the programme at the new centre asked for. Change of Address and Study Centre are not permitted until admissions are finalized. Similarly, change of Study Centre is not permissible in programmes where practical components are involved.

## **4.12 Official Transcripts**

The University provides the facility of official transcripts on request made by the learners on plain paper addressed to Registrar, Student Examination Division (SED), Block-12, IGNOU, Maidan Garhi, New

Delhi-110 068. A fee of Rs.200/- per transcript payable through DD in favour of IGNOU is charged for this purpose. In case of request for sending transcript outside India, the students are required to pay Rs.400.

### 4.13 Disputes on Admission and Other University Matters

The place of jurisdiction of filing of suit, if necessary, will be only at New Delhi/Delhi.

### 4.14 Term-End Examination

The learners can appear in the June as well as December Term-End Examination, after a minimum one year of completion of programme.

The University conducts Term-End Examination twice a year in the month of June and December every year. Students will be permitted to appear in Term-end Examination subject to the condition that registration for the courses in which they wish to appear is valid. Maximum time to pursue the programme is not elapsed and they have also submitted the required number of assignment(s), if any, in those courses by the due date. Post Basic B.Sc. Nursing Programme students can appear in TEE after one year of enrolment, completing of assignments and practical is a prerequisite for TEE including session.

#### Examination Fee

Examination fee of Rs.60/- per course (subject to any change) is required to be paid through Bank Draft in favour of IGNOU payable at the city of Regional Centre where the exam form is submitted. The examination forms are available at all the Study Centres and Regional Centres. Students can also submit on-line examination form as per guidelines through IGNOU website at [www.ignou.ac.in](http://www.ignou.ac.in).

Before submission of the examination form along-with the requisite fee of Rs. 60/- per course in favour of IGNOU payable at the city of concerned Regional Centre, a certificate from the co-ordinator (PIC) Programme Study Centre shall be obtained by the student after submission of assignments for the course he wants to appear in the Term-End-Examination, without the above certificate the examination form will not be accepted.

#### Examination Centre

A student is required to fill the exam centre code in the examination form. For the purpose you are advised to go through the list of programme study centres available in the Student Handbook and Prospectus. In case any student wish to take examination at a particular centre, the code of the chosen centre be filled up as examination centre code. However, examination centre chosen by a student if is not activated, the University will allot another examination centre under the same Region.

#### Date of Submission of Examination Forms

JUNE, TEE	DECEMBER, TEE	LATE FEE	WHERE TO SUBMIT THE FORM
1 <sup>st</sup> March to 31 <sup>st</sup> March	1 <sup>st</sup> Sept to 30 <sup>th</sup> Sept	NIL	Only at the concerned Regional Centre under which your examination centre falls
1 <sup>st</sup> April to 20 <sup>th</sup> April	1 <sup>st</sup> Oct to 20 <sup>th</sup> Oct.	Rs. 300/-	
21 <sup>st</sup> April to 30 <sup>th</sup> April	21 <sup>st</sup> Oct to 31 <sup>st</sup> Oct.	Rs. 500/-	
1 <sup>st</sup> May to 15 <sup>th</sup> May	1 <sup>st</sup> Nov to 15 <sup>th</sup> Nov	Rs. 1000/-	<b>The exam centre will be the Regional Centre City</b>

To avoid discrepancies in filling-up examination form/hardship in appearing in the term-end examination students are advised to :

- remain in touch with your Programme Study Centre/Regional Centre/Student Evaluation Division for change in schedule of submission of examination form fee if any;

- fill-up the examination form for next term-end examination without waiting for the result of the previous term-end examination and also filling-up the courses, for which result is awaited;
- fill-up all the particulars carefully and properly in the examination form to avoid rejection/delay in processing of the form;
- retain proof of mailing/submission of examination form till you receive examination hall ticket;

### **Issue of Examination Hall Ticket**

University issues Examination Hall Ticket to the student's atleast two weeks before the commencement of Term-end Examination the same could also be downloaded from the University's website: [www.ignou.ac.in](http://www.ignou.ac.in). In case any student fails to receive the Examination Hall Ticket within one week before the commencement of the examination the students can download the hall ticket from the website and approach the exam centre for appearing in the exam. Always carry your id with you.

## **4.15 Recognition**

IGNOU Degrees/Diplomas/Certificates are recognized by all member universities of the Association of Indian Universities (AIU) and are at par with Degrees/Diplomas/Certificates of all Indian Universities/Institutions, as per UGC Circular letter no. 1-8/92(CPP) dated February 1992 & UGC circular D.O. No. F,1-25/03(CPP-II) dated 28th July 1993, F.1-52/2000(CPP-II) dated 5th May, 2004, AIU Circular No. EV/11(449/94/176915-177115 dated January 14, 1994 (See Appendix-I, II, III & IV).

### **PREVENTION OF MALPRACTICE/NOTICE FOR GENERAL PUBLIC**

Students seeking admission to various academic programmes of Indira Gandhi National Open University are advised to directly contact IGNOU headquarters at New Delhi or Regional Centres of IGNOU only. Students interacting with intermediaries shall do so at their own risk and cost.

However, in case of any specific complaint regarding fraudulent institutions, fleecing students etc., please contact any of the following members of the Malpractices Prevention Committee:

1. Director, SOCIS (Tele: 2953 3426)
2. Registrar (SRD) (Tele: 2953 2741)
3. Registrar (SED) (Tele: 2953 5828)
4. Director (RSD) (Tele: 2953 2118)
5. Director (SSC) (Tele: 2953 5714)
6. CPRO (Tele: 2953 2321)
7. Security Officer (Tele: 2953 3237)
8. Deputy Registrar (SRD) (Tele: 2953 6215)

Alternatively complaints may be faxed on 29536588, 29532312.

Email : [ignouregistrar@ignou.ac.in](mailto:ignouregistrar@ignou.ac.in)

Website: <http://www.ignou.ac.in>

Note : Except the above mentioned complaints, no other queries will be entertained at the above phone numbers.

As per directions of Hon'ble Supreme Court of India ragging is prohibited. If any incident of ragging comes to the notice of the authority, the concerned student shall be given liberty to explain and if her/his explanation is found not satisfactory, authority would expel her/him from the University.

## **PRE-ADMISSION ENQUIRY**

If you have any queries on academic aspects of the programme please contact:

**Programme Coordinator**  
**Dr. (Mrs.) Bimla Kapoor**  
Professor, SOHS

Indira Gandhi National Open University  
Maidan Garhi New Delhi - 110068 e-mail : [bkapoor@ignou.ac.in](mailto:bkapoor@ignou.ac.in)

**If you have any query regarding admission procedures please write to Regional Director of your region.**

IGNOU admissions are made strictly on the basis of merit. Only those learners who satisfy the eligibility criteria fixed by the University will be admitted. Learners will not be admitted if they are not eligible as per the eligibility criteria. Therefore, the candidates should not be misled by the false promises of admission made by any private individuals or institution.

## WHOM TO CONTACT FOR WHAT

1. Identity Card, Fee Receipt, Bonafide Certificate, Migration, Certificate, Scholarship Forms, change of name, correction of name/address	Concerned Regional Centre
2. Non-receipt of study material and assignments	Concerned Regional Centre
3. Change of Elective/Medium/ opting of left over electives/ Deletion of excess credits	Concerned Regional Centre
4. Schedule/Information regarding Exam-form, Entrance Test, Date-sheet, Hall Ticket	Assistant Registrar (Exam.II), SED, Block-12, IGNOU, Room No. 2, Maidan Garhi, New Delhi-110068 E-mail : sgoswami@ignou.ac.in or Ph. :29536743, 29535924-32 / Extn. : 2202, 2209
5. Result, Re-evaluation, Grade Card, Provisional Certificate, Early Declaration of Result, Transcript, etc.	Deputy Registrar (Exam-III), SED, IGNOU, Block-12, Room No. 1, IGNOU, Maidan Garhi, New Delhi-110068 npsingh@ignou.ac.in or Ph. :29536103, 29535924-32 / Extn. : 2201, 2211, 1316
6. Non-reflection of Assignment Grades/Marks	Asstt. Registrar, (Assignment) SED, Block-3, Room No. 12, IGNOU, Maidan Garhi, New Delhi-110068 assignments@ignou.ac.in or rnjha@ignou.ac.in Ph. : 29535924 / Extn. : 1312, 1319, 1325
7. Status of Project Reports of all programmes	Ph. : 011-5129532294 Ext. 1313/1320/1321 Email : projects@ignou.ac.in
8. Original Degree/Diploma/Verification of Degree/Diploma	Deputy Registrar (Exam.I), SED, , Block 9, IGNOU, Maidan Garhi, New Delhi - 110068. Ph. : 29535438, 29535924-32 / Extn. : 2224, 2213
9. Re-admission and Credit Transfer	Student Registration Division, Block No. 3, Maidan Garhi, New Delhi-110068
10. Student Grievances (SED)	Asstt. Registrar (Student Grievance) SED, Block-3, Room No. 13, IGNOU Maidan Garhi, New Delhi-110068 sedgrievance@ignou.ac.in Ph. : 29532294, 29535924 / Extn. : 1313
11. Purchase of Audio/Video Tapes	Marketing Unit, EMPC, IGNOU, Maidan Garhi, New Delhi - 110068
12. Academic Content	Director of the School concerned
13. Approval of a Project Synopsis	Project Co-ordinator in the Concerned School
14. Submission of Project Reports Except BCA & MCA	Asstt.Registrar(Projects), SED, Block-12, Telephone Nos.: 29535924-32 Extn. : 2216
15. Submission of BCA & MCA, Project Reports	Concerned Regional Centre
16. Student Support Services and Student Grievances, pre-admission Inquiry of various courses in IGNOU	Director, Student Service Centre, IGNOU, Maidan Garhi, New Delhi - 110068 ssc@ignou.ac.in Telephone Nos.: 29535714, 29533869, 2953380 Fax: 29533129

# Appendices

*Blank*



UNIVERSITY GRANTS COMMISSION  
BAHAUR SHAH ZAFAR MARG  
NEW DELHI-110 002

No.F.1-8/92(CPP)

February, 1992

The Vice-Chancellors/Director's  
of all the Indian Universities/  
Deemed Universities/Institutions  
of National Importance.  
-----

\* Sub: Recognition of Degrees/Diplomas awarded by  
Indira Gandhi National Open University, New Delhi.

Sir,

~~I am directed to say that~~ Indira Gandhi National  
Open University, New Delhi has been established by  
Sub-Section (2) of Section (1) of the IGNOU Act, 1985  
(50 of 1985) vide notification No.F.13-12/85-Dusk(U)  
dated 19.9.1985 issued by the Government of India,  
Ministry of Human Resource Development (Department of  
Education), New Delhi and is competent to award its  
own degrees/Diplomas.

The Certificates, diplomas and degrees awarded by  
Indira Gandhi National Open University are to be  
treated equivalent to the corresponding awards of the  
Universities in the country.

Yours faithfully,

  
(Gurcharan Singh)  
Under Secretary



एन सी ई आर  
विश्वविद्यालय अनुदान आयोग  
बाहुगल नगर मन्ड  
नई दिल्ली-110 002

GRANT'S UNGRANTS  
UNIVERSITY GRANTS COMMISSION  
BAHADURSHAH ZAFAR MARG  
NEW DELHI-110 002

R.P. Gangurde  
Additional Secretary  
Tel.No.3319659

D.O.No.F.1-26/03(CPP-11)

July, 1993

Dear Vice Chancellor,

28 JUL 1993

As you are aware, the Open Universities have been established in the country by an Act of Parliament or State Legislature in accordance with the provisions contained in Section 2(f) of University Grants Commission Act, 1956. These universities are, therefore, empowered to award degrees in terms of Section 22 (1) of the UGC Act, 1956.

It has been brought to the notice of the Commission that the students who have done their M.A. from open universities are debarred by universities from registration for Ph.D. studies. This is most unfair in view of the importance attached to the Open University and distance learning in National Policy on Education, 1986. The Programme of Action-02 also aims at promoting the mobility of students among open universities and among the traditional universities. This can be made possible only when there is a workable understanding between open universities and traditional universities for recognition of each other's degrees on reciprocal basis. A Memorandum of Understanding has already been signed between University of Pondicherry and Indira Gandhi National Open University which provides for recognition of each other's degrees and diplomas as well as transfer of credits for courses successfully completed by students between the two universities. The other universities may also make similar arrangements so that the mobility of students from Open University stream to traditional universities is ensured without any difficulty.

I hope that your university will make necessary efforts in this direction and let the Commission know the progress.

With regards,

Yours sincerely,

*R.P. Gangurde*

(R.P. Gangurde)

23236351, 23232701, 23237721, 23234116  
23234733, 23232117, 23234734, 23234437



ज्ञान-विज्ञान सिद्धयते

विश्वविद्यालय अनुदान आयोग  
बहादुरशाह जफर मार्ग  
नई दिल्ली-110 002  
UNIVERSITY GRANTS COMMISSION  
BAHADURSHAH ZAFAR MARG  
NEW DELHI-110 002

F1-52/2000(CPP-II)

April, 2004

5 MAY 2004

The Registrar  
Indira Gandhi National Open University  
Maidan Garhi  
New Delhi - 110 068

Subject: Recognition of Degrees awarded by Open Universities.

Sir/Madam,

There are a number of open Universities in the country offering various degrees/diploma through the mode of non-formal education. The Open Universities have been established in the country by an Act of Parliament or State Legislature in accordance with the provisions contained in Section 2(f) of University Grants Commission Act, 1956. These universities are, therefore, empowered to award degrees in terms of Section 22(1) of the UGC Act, 1956.

A circular was earlier issued vide UGC letter N.F.1-8/92(CPP) dated February, 1992 mentioning that the Certificate, Diplomas and Degrees awarded by Indira Gandhi National Open University are to be treated equivalent to the corresponding awards of the Universities in the country.

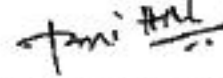
Attention is further invited to UGC circular No.F1-25/93(CPP-II) dated 28<sup>th</sup> July, 1993 (copy enclosed) for recognition of degrees and diplomas as well as transfer of credit for courses successfully completed by students between the two types of universities so that the mobility of students from Open University stream to traditional Universities is ensured without any difficulty.

The UGC has specified the nomenclature of degrees under Section 22(3) of the UGC Act, 1956 to ensure mandatory requirements viz. minimum essential academic inputs required for awarding such degrees. A copy of Gazette Notification regarding specification of degrees issued vide No.1-52/97(CPP-II) dated 31st January 2004 is enclosed. The details are also given in UGC Web site: [www.ugc.ac.in](http://www.ugc.ac.in)

Contd...../-

May, I therefore request you to treat the Degrees /Diploma /Certificates awarded by the Open Universities in conformity with the UGC notification on Specification of Degrees as equivalent to the corresponding awards of the traditional Universities in the country.

Yours faithfully,



**(Dr.[Mrs.]Pankaj Mittal)**  
Joint Secretary

**Encl : As above**

**Copy to: -**

1. The Secretary. Government of India, Ministry of Human Resource Development, Department of Secondary Education and Higher Education, Shastri Bhavan, New Delhi-110001.
2. The Secretary, All India Council for Technical Education, I.G. Sports Complex, Indraprastha Estate, New Delhi-110002.
3. The Secretary, Association of Indian Universities (AIU), 16 Comrade Inderjit Gupta Marg (Kotla Marg), New Delhi-110002.
4. The Secretary, National Council for Teacher Education, I.G. Stadium, I.P. Estate, New Delhi-110002.
5. The Director of Distance Education Council, IGNOU Campus, Maidan Garhi, New Delhi-110068.
6. The Vice-chancellor Indira Gandhi National Open University, Maidan Garhi, New Delhi-110068
7. The Vice-chancellor Dr. B.R. Ambedkar Open University, Road No.46, Jubilee Hills, Hyderabad-500033(Andhra Pradesh)
8. The Vice-chancellor Nalanda Open University, West Gandhi Maidan, Patna-800001(Bihar)
9. The Vice-chancellor Dr. Babasahab Ambedkar Open University, Shahibaug, Ahmedabad-380003(Gujarat)
10. The Vice-chancellor Karnataka State Open University, Manasagangotri, Mysore-570006(Karnataka)
11. The Vice-chancellor Yashwant Rao Chavan Maharashtra Open University, Nashik-422222(Maharashtra)
12. The Vice-chancellor, Kota Open University (Vardhaman Mahaveer Open University), Kota-324010(Rajasthan).
13. The Vice-chancellor Netaji Subhash Open University, Kolkata - 700020 (West Bengal)
14. The Vice-Chancellor, Madhya Pradesh Bhoj(Open) University, Bhopal-462016 (M.P.)



**(V.K. Jaiswal)**  
Under Secretary



**ASSOCIATION OF INDIAN UNIVERSITIES**  
AIU HOUSE, 16 KOTLA MARG, NEW DELHI-110 002

Phones : 3312305, 3313390  
3310059, 3312429

Gram : ASINGU  
Telex : 31 66180 AIU IN  
Fax : 011-3315105  
No. EV/II(449)/94/176915-177115  
January 14, 1994

The Registrar(s)

Member Universities.

**Subject : Recognition of Degrees/Diplomas of Open Universities**

Dear Sir,

The Standing Committee at its 237th meeting held at Utkal University and the 68<sup>th</sup> Annual Session of the AIU and in December, 1993 at the University of Delhi have decided in principle that the Degrees of the Open Universities be recognized in terms of the flowing resolutions:

"Resolved that the examinations of one University should be recognized by another on reciprocal basis, provided that the entrance qualification, duration of course and the general standard of attainment are similar to those prescribed by the recognized university."

"Further resolved that in case of Degrees awarded by Open Universities, the conditions regarding entrance qualifications and duration of the course be relaxed provided that the general standard of attainment are similar to those prescribed by the recognized university."

The decision is brought to the notice of the Universities for favour of appropriate action in the matter. The additional information, if required in this behalf, may kindly be obtained from the Registrar of the Universities direct.

Thanking You,

Your faithfully,

Sd/-  
(K.C.KALRA)  
Joint Secretary

## REGIONAL CENTRES AND SENIOR STAFF

## NAMES &amp; ADDRESSES OF IGNOU REGIONAL CENTRES

S.NO	REGIONAL CENTRE, CODE AND NO. OF LEARNER SUPPORT CENTRES	ADDRESS OF THE REGIONAL CENTRE TEL., FAX & E-MAIL	SENIOR STAFF	JURISDICTION
1	<b>AGARTALA</b> RC CODE : 26 NO OF LSC:45	REGIONAL DIRECTOR IGNOU REGIONAL CENTRE M.B.B. COLLEGE COMPOUND P.O. AGARTALA COLLEGE AGARTALA – 799 004 TRIPURA PH.OFF: 0381-2519391 FAX : 0381-2516266 EMAIL : rcagartala@ignou.ac.in	DR. K. S. CHAKRABORTY, RD MS. NAMRATA HAGJER, ARD (SEL. GRADE)	<b>STATE OF TRIPURA</b> (DISTRICT: DHALAI, NORTH TRIPURA, SOUTH TRIPURA, WEST TRIPURA)
2	<b>AHMEDABAD</b> RC CODE: 09 NO OF LSC:80	REGIONAL DIRECTOR IGNOU REGIONAL CENTRE OPP. NIRMA INSTT OF TECHNOLOGY SARKHEJ-GANDHINAGAR HIGHWAY CHHARODI AHMEDABAD – 382 481 GUJARAT  PH.OFF: 02717-242975, 242976,241579 FAX : 02717-241580 EMAIL : rcahmedabad@ignou.ac.in	DR SRIKANT MOHAPATRA RD MS. AVANI TRIVEDI, ARD DR. AMIT KUMAR JAIN ,ARD DR. PATEL JAYESH ,ARD SH. VED A KUMAR, AR SH J B DABHAI, AR	<b>STATE OF GUJARAT</b> (DISTRICT: AHMEDABAD, ANAND, BANASKANTHA, BHARUCH, DAHOD, GANDHINAGAR, MEHSANA, PATAN, SABARKANTHA, SURAT, VADODARA, VALSAD, DANG, KHEDA, NARMADA, NAVSARI, PANCHMAHAL, TAPI) <b>DAMAN (U.T.)</b>
3	<b>AIZWAL</b> RC CODE: 19 NO OF LSC:42	REGIONAL DIRECTOR IGNOU REGIONAL CENTRE LAL BULAIA BUILDING M.G. ROAD KHATLA (NEAR CENTRAL YMCA OFF) AIZWAL – 796 001 MIZORAM PH.OFF: 0389-2311693 / 2311692 FAX : 0389-2311789 EMAIL : rcaizwal@ignou.ac.in	DR. S.R. ZONUNTHARA, RD	<b>STATE OF MIZORAM</b> (DISTRICT: AIZWAL, LUNGLEI, KOLASIB, MAMIT, SERCHHIP, SAIHA, CHAMPHAI, LAWNGTLAI)
4	<b>ALIGARH</b> RC CODE: 47 NO OF LSC:39	REGIONAL DIRECTOR IGNOU REGIONAL CENTRE 3/310 MARRIS ROAD ALIGARH – 202 001 UTTAR PRADESH  PH.OFF: 0571-2700120 / 2701365 FAX : 0571-2402147 EMAIL : rcaligarah@ignou.ac.in	DR.A.N.TRIPATHI RD SH. BHANU PRATAB, ARD SH. SHER SINGH ARD DR. ATAUR RAHMAN ARD SH. A K PANDEY, AR	<b>STATE OF UTTAR PRADESH</b> (DISTRICT: ALIGARH, AGRA, BUDAUN, BULANDSHAHR, ETAH, ETAWAH, FIROZABAD, J.P. NAGAR, KASHIRAM NAGAR/KASGANJ, MAHAMAYA NAGAR/HATHRAS, MAINPURI, MATHURA, MORADABAD AND RAMPUR)
5	<b>BANGALORE</b> RC CODE: 13 NO OF LSC:109	REGIONAL DIRECTOR IGNOU REGIONAL CENTRE NSSS KALYANA KENDRA 293, 39TH CROSS, 8TH BLOCK JAYANAGAR BANGALORE - 560 070 KARNATAKA  PH.OFF: 080-26654747 / 26657376 FAX :080-26644848 EMAIL : rcbangalore@ignou.ac.in	DR M .PARATHASARATHY , RD MR.G.H. IMRAPUR, ARD MS.P.M. SOWJANYA, ARD SH. J. THIRUMURUGAN, AR MS. SHANTHALAKSHMI.R,AR	<b>STATE OF KARNATAKA</b> (DISTRICT: BANGALORE, BANGALORE RURAL, CHIKBALLAPUR, CHITRADURGA, DAVANAGERE, KOLAR, RAMANAGARA, SHIMOGA, TUMKUR,RAMANAGAR A, GADAG, HAVERI, BELLARY,CHAMARAJA NAGAR & CHIKMAGALUR DAKSHINA KANNADA, HASSAN, KODAGU, MANDYA, MYSORE, UDUPI)

6	<b>BHAGALPUR</b> RC CODE: 82 NO OF LSC:1	REGIONAL DIRECTOR IGNOU REGIONAL CENTRE CAMP OFFICE MARWARI COLLEGE PREMISES BHAGALPUR BIHAR 812007  PH.OFF:0641-2905028/2905029  EMAIL :rcbhagalpur@ignou.ac.in	DR. U.C.PANDEY,RD DR. VIVEK SHRIVASTAVA,ARD DR. SHALINI ,ARD	<b>STATE OF BIHAR</b> (DISTRICT: BHAGALPUR, BANKA & MUNGER)
7	<b>BHOPAL</b> RC CODE: 15 NO OF LSC:142	REGIONAL DIRECTOR IGNOU REGIONAL CENTRE SANCHI COMPLEX, 3RD FLOOR OPP. BOARD OF SECONDARY EDN. SHIVAJI NAGAR BHOPAL - 462 016 MADHYA PRADESH  PH.OFF: 0755-2578455 / 2578452,2762524 FAX : 0755-2578454 EMAIL : rcbhopal@ignou.ac.in	DR. K.S. TIWARI, RD DR. SMRITI GARGAVA ,ARD DR. SHIREESH PAL SINGH,ARD SH.SUBASH RANJAN KAYAK, ARD SH. NIKHIL KANT, AR MS. SANDHAYA MISHRA,AR	<b>STATE OF MADHYA PRADESH</b> (DISTRICT: ALIRAJPUR, BALAGHAT, BHIND, CHHATARPUR, DATIA, HARDA, KHANDWA, MANDSAUR, NEEMUCH, RAJGARH, SAGAR, SHAJAPUR, BAWANI, BHOPAL, DEWAS, GUNA, HOSHANGABAD, JHABUA, KHARGONE, MORENA, PANNA, RATLAM, SATNA, SHEOPUR, TIKAMGARH, VIDISHA, ASHOK NAGAR, BETUL, BURHANPUR, DAMOH, DHAR, GWALIOR, INDORE, RAISEN, REWA, SEHORE, SHIVPURI, UJJAIN)
8	<b>BHUBANESHWAR</b> RC CODE: 21 NO OF LSC:128	REGIONAL DIRECTOR IGNOU REGIONAL CENTRE C - 1, INSTITUTIONAL AREA BHUBANESHWAR - 751 013 ORISSA  PH.OFF: 0674-2301348 / 2301250 FAX : 0674-2300349 EMAIL : rcbhubaneswar@ignou.ac.in	DR. S.K. TRIPATHY, RD DR. S. MOHANTI, DD, MR. S.K. PANIGRAHI, ARD(SR SCALE) DR BIJAYA KUMAR SAHOO ,ARD SH. R.K. RATH, AR (on deputation)	<b>STATE OF ORISSA</b> (DISTRICT: ANGUL, BHADRAK, BARAGARH, BALASORE, CUTTACK, DEOGARH, DHENKANAL GANJAM, GAJAPATI, JHARSUGUDA, JAJPUR, JAGATSINGHPUR, KHORDHA, KEONJHAR, KANDHAMAL, KENDRAPARA, MAYURBHANJ, NAYAGARH, PURI, SAMBALPUR, SUNDERGARH)
9	<b>BIJAPUR</b> RC CODE: 85 NO OF LSC:	REGIONAL DIRECTOR IGNOU REGIONAL CENTRE BLDEA'S JSS COLLEGE OF EDU. SS JUNIOR COLLEGE OAMPUS BIJAPUR- 586101 KARNATAKA PH: OFF 08352-258417 08971053421 FAX : EMAIL : rcbijapur@ignou.ac.in	DR.(MS) J.S.DOORTHY RD	<b>STATE OF KARNATAKA</b> COVERING (DISTRICTS BAGALKOTE, BIJAPUR, BIDAR, GULBARGA, KOPPAL RAICHUR & YADGIR)
10	<b>CHANDIGARH</b> RC CODE: 06 NO OF LSC:29	REGIONAL DIRECTOR IGNOU REGIONAL CENTRE SCO 208 SECTOR 14 PANCHKULA - 134 109 HAYRANA  PH.OFF : 0172-2590277, 2590278 FAX : 0172-2590279 EMAIL : rcchandigarh@ignou.ac.in	DR. ASHA SHARMA, RD DR. JOGINDER SINGH YADAV,DD DR.SAVITA PANWAR,ARD DR.PRATIBHA BHAI ,ARD DR. D.N. VERMA, AR	<b>STATE OF PUNJAB</b> (DISTRICT: PATIALA, MOHALI, RUP NAGAR, FATEHGARH SAHEB), STATE OF HARYANA (DISTRICT: AMBALA, PANCHKULA), <b>CHANDIGARH (U.T.)</b>
11	<b>CHENNAI</b> RC CODE: 25 NO OF LSC:127	REGIONAL DIRECTOR IGNOU REGIONAL CENTRE 3 <sup>rd</sup> FLOOR G R COMPLEX 407-408 ANNA SALAI NANDANAM CHENNAI - 600 035	DR. S. MOHANAN, RD DR A VARADARAJAN ,DD DR S K ZAREENA ,ARD SH. S SRINIVAS, DR SH. Z.F. RAHMAN, AR SH. S. SENTHILRAJ, AR	<b>STATE OF TAMILNADU</b> (DISTRICT: CHENNAI, THIRUVALUR, KANCHIPURAM, VELLORE, THIRUVANNAMALAI,

		TAMILNADU PH.OFF: 044-24312766, 24312979 FAX : 044-24312799 EMAIL : rcchennai@ignou.ac.in		KRISHNAGIRI, DHARMAPURI, SALEM, NAMAKKAL, VILLUPURAM, CUDDALORE, PERAMBALUR, NAGAPATTINAM, THIRUVARUR), <b>PONDICHERRY (U.T.)</b>
12	<b>COCHIN</b> RC CODE: 14 NO OF LSC:122	REGIONAL DIRECTOR IGNOU REGIONAL CENTRE KALOOR COCHIN - 682 017 KERALA  PH.OFF: 0484-2340203 /2348189 / 2330891 FAX : 0484-2340204 EMAIL : rccochin@ignou.ac.in	DR.V VENUGOPAL REDD, RD MS. SINDHU P. NAIR, ARD DR.K SASICOMAR.BARUMAT, ARD DR SEETHA KAKKOTH ,ARD SH. N.V. SHREEDHARAN, DR SH GUJALA ASHOK ,AR	<b>STATE OF KERALA</b> (DISTRICT: ALAPPUZHA, ERNAKULAM, IDUKKI, KOTTAYAM, KOZHICODE, MALAPPURAM, PALAKKAD, THIRUSSUR,  <b>LAKSHADWEEP (U.T.)</b>
13	<b>DARBHANGA</b> RC CODE: 46 NO OF LSC:42	REGIONAL DIRECTOR IGNOU REGIONAL CENTRE LALIT NARAYAN MITHLA UNIV.CMPS KAMESHWARANAGAR, NEAR CENTRAL BANK DARBHANGA - 846 004 BIHAR PH.OFF : 06272-251833 FAX : 06272-253719 EMAIL : rcdarbhang@ignou.ac.in	DR. S.S. SINGH, RD DR. SHAILINI DIXIT ,ARD DR. MEETA ,ARD SH. ANAND KUMAR ,AR	STATE OF BIHAR (DISTRICT:BEGUSARAI , DARBHANGA,EAST CHAMPARAN,GOPALG ANJ,SARAN,SIWAN, SHEOHAR,SITAMARHI, SAMISTIPUR, MADHUBANI,MUZAFF ARPUR & WEST CHAMPARAN)
14	<b>DEHRADUN</b> RC CODE: 31 NO OF LSC:62	REGIONAL DIRECTOR IGNOU REGIONAL CENTRE NANOOR KHERA, TAPOVAN RAIPUR ROAD DEHRADUN - 248 001 UTTARANCHAL  PH.OFF: 0135-2789205 FAX : 0135-2789190 EMAIL : rcdehradun@ignou.ac.in	DR. ANIL KUMAR DIMRI, RD DR. RANJAN KUMAR, DD DR RAJEEV KUMAR,ARD DR N R RAJENDRA PRASAD,ARD SH. I.M. DHIWAN, AR	<b>STATE OF</b> <b>UTTARANCHAL</b> (DISTRICT: DEHRADUN, PAURI, CHAMOLI, TEHRI, UTTARAKASHI, RUDRAPRAYAG, HARIDWAR, NAINITAL, ALMORA, PITHORAGARH, US NAGAR, CHAMPAWAT, BAGESHWAR) <b>STATE OF UTTAR</b> <b>PRADESH</b> (DISTRICT: SAHARANPUR, MUZAFFAR NAGAR, BIJNORE)
15	<b>DELHI 1</b> RC CODE: 07 NO OF LSC:85	REGIONAL DIRECTOR IGNOU REGIONAL CENTRE PLOT NO J-2/1 BLOCK- B 1 MOHAN COOPERATIVE INDUSTRIAL ESTATE MATHURA ROAD NEW DELHI – 110 044 DELHI  PH.OFF : 011-26990090, 26990091 FAX : 011-26990084 EMAIL : rcdelhi1@ignou.ac.in	DR. SANJEEV PANDEY, RD DR. PURNENDU TRIPATHI,DD DR. V.P. RUPAM, ARD (SEL. GRADE) DR. BIR.A,ARD(SEL.GRADE) SH. RAM KISHAN, AR	<b>STATE OF DELHI</b> (COVERING AREAS OF MEHRAULI, CHANAKYAPURI, LODHI COLONY, SOUTH EXTENSION, R.K. PURAM, VASANT KUNJ, SAKET, GREEN PARK, LAJPAT NAGAR, G.K., MALVIYA NAGAR, BHOGAL, ASHRAM, HAUZ KHAS, MUNIRIKA, OKHLA, SANGAM VIHAR, FRIENDS COLONY, BADARPUR), STATE OF HARYANA (DISTRICT: FARIDABAD)
16	<b>DELHI 2</b> RC CODE: 29 NO OF LSC:73	REGIONAL DIRECTOR IGNOU REGIONAL CENTRE GANDHI SMRITI & DARSHAN SAMITI RAJGHAT NEW DELHI - 110 002  PH.OFF: 011-23392374 / 23392376 -77 FAX : 011-23392375 EMAIL : rcdelhi2@ignou.ac.in	DR.D.B. DAMLE, RD (I/C) MS. KUMUD. VERMA ,ARD DR. SIRAN. MUKHERJI ,DD MR. RAJBIR SINGH RANA, AR	<b>STATE OF DELHI</b> (COVERING AREAS OF KARALA, PRAHLADPUR, BANAGAR, LIBASPUR, RAMA VIHAR, RANI BAGH, SULTAN PURI, BUD VIHAR, MANGOLPURI, PITAMPURA, JAHANGIR PURI, JHARODA MAJA,



				BURAI, DR. MUKHERJEE NAGAR, MODEL TOWN, SHAKURPUR, COLONY, GTB NAGAR, ASHOK VIHAR, SHASTRI NAGAR, CIVIL LINES, YAMUNA VIHAR, NAND NAGRI, BHR)
17	<b>DELHI 3</b> RC CODE: 38 NO OF LSC:41	REGIONAL DIRECTOR IGNOU REGIONAL CENTRE F-634-636 PALAM EXTNSION RAM PHAL CHOWK (NEAR SECTOR 7), DWARKA NEW DELHI - 110 045  PH.OFF : 011- 25088964 FAX : 011-25088983 EMAIL : rcdelhi3@ignou.ac.in	DR. MANOJ KUMAR DASH, RD DR. NAVITA ABROL, ARD SH. K .C.DALAI,ARD MS GEETA SHARDA,AR	<b>STATE OF DELHI</b> (COVERING ARAS OF MUNDKA, NANGLOI JAT, PEERAGARHI, PUNJABI BAGH, BAKARWALA, MEERA BAGH, MOTI NAGAR, TILAK NAGAR, TILANGPUR, KOTLA, VIKASPURI, SUBHASH NAGAR, UTTAM NAGAR, JANAKPURI, NAZAFGARH, MAHAVIR ENC., SAGARPUR, DWARKA, PALAM, PALAM FARMS, KAPASERA, DHAULA KUAN, NARAINA), <b>STATE OF HARYANA</b> (DISTRICT: GURGAON)
18	<b>DEOGHAR</b> RC CODE 87 NO OF LSC:2	REGIONAL DIRECTOR IGNOU REGIONAL CENTRE A S COLLEGE DEOGHAR JHARKHAND PH.OFF: 06432-34448 FAX : EMAIL : <a href="mailto:redeoghar@ignou.ac.in">redeoghar@ignou.ac.in</a>	DR (MS) SARAH NASREEN, RD (I/C)	<b>STATE OF JHARKHAND</b> COVERING (DISTRICTS DEOGHAR,GODDA,SAH IBGANJ,PAKUR,DUMK A,JAMTARA,DHANBAD ,BOKARO & GIRIDIH)
19	<b>GANGTOK</b> RC CODE: 24 NO OF LSC: 15	REGIONAL DIRECTOR IGNOU REGIONAL CENTRE GAIRIGAON TADONG PO SHUMBUK HOUSE GANTOK – 737 102 SIKKIM  PH.OFF: 0359-2270923 FAX : 0359-2212501 EMAIL : <a href="mailto:rcgangtok@ignou.ac.in">rcgangtok@ignou.ac.in</a>	DR. ILA DAS, RD DR LALCHHARLINI ,ARD	<b>STATE OF SIKKIM</b> (DISTRICT: EAST SIKKIM, WEST SIKKIM, NORTH SIKKIM, SOUTH SIKKIM)
20	<b>GUWAHATI</b> RC CODE: 04 NO OF LSC:173	REGIONAL DIRECTOR IGNOU REGIONAL CENTRE HOUSE NO 71,GMC ROAD CHRISTIAN BASTI GUWAHATI – 781 005 ASSAM  PH.OFF: 0361-2343783 / 2343785-86 FAX : 0361-2343784 EMAIL : <a href="mailto:rcguwahati@ignou.ac.in">rcguwahati@ignou.ac.in</a>	DR.SANJIB KATAKY, RD (I/C) DR JAGDAMA PRASAD,ARD DR. GOBIND SINGH BISHT AR	<b>STATE OF ASSAM</b> (DISTRICT: TINSUKIA, DIBRUGARH, SIBSAGAR, DHEMAJI, JORHAT, LAKHIMPUR, GOLAGHAT, SONITPUR, KARBI, ANGLONG, NAGAON, MARIGAON, DARRANG, KAMRUP, NALBARI, BARPETA, BONGAIGAON, GOALPARA, KOKRAJHAR, DHUBRI, NORTH CACHAR HILLS, CACHAR, HAILAKANDI, KARIMGANJ, KAMRUP, METROPOLITAN, BAKSA, UDALGURI, CHIRANG)
21	<b>HYDERABAD</b> RC CODE: 01 NO OF LSC:81	REGIONAL DIRECTOR IGNOU REGIONAL CENTRE PLOT NO 207 KAVURI HILLS PHASE II, NEAR MADHAPUR PS, JUBILEE HILLS (P.O.) HYDERABAD - 500 033 ANDHRA PRADESH	DR. B. RAJAGOPAL, RD DR. D.R. SHARMA, DD SH. K.K. MOHAN, AR DR M SHANMUGAM ,ARD SH A.L.PATHI RAO,AR	<b>STATE OF ANDHRA PRADESH</b> (DISTRICT: ADILABAD, ANANTAPUR, HYDERABAD, KADAPA, KARIM NAGAR, KURNOOL, MEDAK, MAHABOOB

		PH.OFF : 040-23117550-53 FAX : 040-23117554 EMAIL : <a href="mailto:rchyderabad@ignou.ac.in">rchyderabad@ignou.ac.in</a>		NAGAR, NALGONDA, NIZAMABAD, RANGA REDDY, WARANGAL)
22	<b>IMPHAL</b> RC CODE: 17 NO OF LSC:36	REGIONAL DIRECTOR IGNOU REGIONAL CENTRE ASHA JINA COMPLEX NORTH AOC IMPHAL – 795 001 MANIPUR PH.OFF: 0385-2421190 / 2421191 FAX : 0385-2421192 EMAIL : <a href="mailto:rcimphal@ignou.ac.in">rcimphal@ignou.ac.in</a>	DR SALAM DILAN SINGH RD DR. DANIEL JOSEPH KUBA, (ARD)	<b>STATE OF MANIPUR</b> (DISTRICT: BISHNUPUR, CHURACHANDPUR, CHANDEL, IMPHAL EAST, IMPHAL WEST, SENAPATI, TAMENGLONG, THOUBAL, UKHRUL)
23	<b>ITANAGAR</b> RC CODE: 03 NO OF LSC:25	REGIONAL DIRECTOR IGNOU REGIONAL CENTRE 'HORNHILL COMPLEX' 'C' SECTOR (NEAR CENTRAL SCH.) NAHARLAGUN ITANAGAR - 791 110 ARUNACHAL PRADESH  PH.OFF: 0360-2247536 / 2247538 FAX : 0360-2247537 EMAIL : <a href="mailto:rcitanagar@ignou.ac.in">rcitanagar@ignou.ac.in</a>	SH. MANOJ TIRKEY (RD (/C)	<b>STATE OF ARUNACHAL PRADESH</b> (DISTRICT: ANJAW, CHANGLANG, EAST KAMENG, EAST SIANG, KURUNG KUMEY, LOHIT, LOWER DIBANG VALLEY, LOWER SUBANSIRI, PAPUM PARE, TAWANG, TIRAP, UPPER DIBANG, UPPER SUBANSIRI, UPPER SIANG, WEST KAMENG, WEST SIANG)
24	<b>JABALPUR</b> RC CODE: 41 NO OF LSC:41	REGIONAL DIRECTOR IGNOU REGIONAL CENTRE 2ND FLOOR, RAJSHEKHAR BHAVAN RANI DURGAVATI VISHVAVIDYALAYA CAMPUS, PACHPEDHI JABALPUR - 482 001 MADHYA PRADESH  PH.OFF: 0761-2600411 / 2609896,2609902 FAX : 0761-2609919 EMAIL : <a href="mailto:rcjabalpur@ignou.ac.in">rcjabalpur@ignou.ac.in</a>	DR. MASOOD PARVEEZ RD DR.HARISH KUMAR KEWAT, ARD DR. RAGHAVENDRA TRIPATHI, ARD SH. R.K.SONI, AR	<b>STATE OF MADHYA PRADESH</b> (DISTRICT: ANNUPUR, BALAGHAT, CHHINDWARA, DINDORI, JABALPUR, KATNI, MANDLA, NARSHINGAPUR, SEONI, SHAHDOL, SIDDHI, SIHORA, SINGRAULI, UMARIA)
25	<b>JAIPUR</b> RC CODE: 23 NO OF LSC:94	REGIONAL DIRECTOR IGNOU REGIONAL CENTRE 70/79, SECTOR - 7 PATEL MARG MANSAROVAR JAIPUR - 302 020 RAJASTHAN  PH.OFF: 0141-2785763 / 2785750 FAX : 0141-2784043 EMAIL : <a href="mailto:rcjaipur@ignou.ac.in">rcjaipur@ignou.ac.in</a>	DR. S.N. AMBEDKAR, RD DR. MAMTA BHATIA, DD DR INDU RAVI,ARD DR MD BANIYAMUDDIN ,ARD SH. B.L. MEENA, AR	<b>STATE OF RAJASTHAN</b> STATE OF RAJASTHAN (DISTRICT: AJMER,ALWAR,BARAN ,BHARATPUR,BHILWARA,BUNDI,CHITTORGARH, CHURU,DAUSA,DHOLPUR, HANUMUNGARH,JAIPUR,JHALAWAR,JHUNJHUNU, KARAUJI, KOTA, , SAWAI, SIKAR, SRI GANGANAGAR TONK, TONK MADHOPUR ,BANSWARA & PRATAPGARH
26	<b>JAMMU</b> RC CODE: 12 NO OF LSC:63	REGIONAL DIRECTOR IGNOU REGIONAL CENTRE SPMR COLLEGE OF COMMERCE AUROBINDO BLOCK 1ST FLOOR CANAL ROAD JAMMU - 180 001 JAMMU & KASHMIR PH.OFF: 0191-2579572 / 2546529 FAX : 0191-2561154 EMAIL : <a href="mailto:rcjammu@ignou.ac.in">rcjammu@ignou.ac.in</a>	ER. K.K.BHAT, RD DR. INDRANI LAHIRI, ARD DR SANDEEP GUPTA,ARD DR VIKRAM SINGH,ARD SH.PAPPU SINGH SAPRIBAN, AR	<b>STATE OF JAMMU &amp; KASHMIR</b> (JAMMU REGION - DISTRICT: DODA, JAMMU, KATHUA, KISHTWAR, POONCH, RAJOURI, RAMBAN, REASI, SAMBA, UDHAMPUR)
27	<b>JODHPUR</b> RC CODE 88 NO OF LSC:	REGIONAL DIRECTOR IGNOU REGIONAL CENTRE ONKAR MALL SUNMANI COLLEGE OF COMMERCE JODHPUR RAJASTHAN 342008 PH.OFF : 0291-2753989	DR B P NARASIMHA RAO ,RD  DR AJAY VARDHAN ACHARYA ,ARD	<b>STATE OF RAJASTHAN</b> STATE OF RAJASTHAN COVERING DISTRICTS JODHPUR, BARMER, JAISALMER,RAJASMA ND, UDAIPUR,

		FAX : EMAIL: narasimhabpr@gmail.com		BIKANER,JALORE,SIRO HI,NAGOUR, DUNGARPUR & PALI,
28	<b>JORHAT</b> RC CODE: 37 NO OF LSC:	REGIONAL DIRECTOR IGNOU REGIONAL CENTRE		<b>STATE OF ASSAM</b> (DISTRICT: NAGAON, GOLAGHAT, JORHAT, SHIVASAGAR, DIBRUGARH, INSUKIA, LAKHIMPUR, DHEMAJI, SONITPUR) <i>Note: Currently under Guwahati RC</i>
29	<b>KARNAL</b> RC CODE: 10 NO OF LSC:37	REGIONAL DIRECTOR IGNOU REGIONAL CENTRE 06, SUBHASH MARG SUBHASH COLONY NEAR HOME GUARD OFFICE KARNAL - 132 001 HARYANA  PH.OFF: 0184-2271514 / 2260075 FAX : 0184-2255738 EMAIL : rckarnal@ignou.ac.in	DR. ASHOK SHARMA, RD SH.AMIT KR SHRIVASTAVA, ARD DR SHYNI DUGGAL ,ARD DR VINITA KATIYAR,ARD SH. C.L. SHARMA, AR	<b>STATE OF HARYANA</b> (DISTRICT: BHIWANI, FATEHABAD, HISAR, JHAJJAR, JIND, KAITHAL, KARNAL, KURUKSHETRA, MAHENDRAGARH, MEWAT, PALWAL, PANIPAT, REWARI, ROHTAK, SIRSA, SONIPAT, YAMUNANAGAR)
30	<b>KHANNA</b> RC CODE: 22 NO OF LSC:55	REGIONAL DIRECTOR IGNOU REGIONAL CENTRE I.T.I. BUILDING BULEPUR (DISTRICT LUDHIANA) KHANNA – 141 401 PUNJAB  PH.OFF : 01628-229993 / 237361 FAX : 01628-238284 EMAIL : rckhanna@ignou.ac.in	DR. SANTOSH KUMARI, RD DR. ANJANA,ARD DR. DHARAM PAL ,ARD SH.TEJINDER PAL SINGH,AR	<b>STATE OF PUNJAB</b> (DISTRICT: GURDASPUR, AMRITSAR, TARN TARAN, KAPURTHALA, JALANDHAR, HOSHIARPUR, SBS NAGAR/NAWANSHAH R, BARNALA, SANGRUR, BATHINDA, MANSA, MUKTSAR, LUDHIANA, FEROZEPUR, FARIDKOT, MOGA)
31	<b>KOHIMA</b> RC CODE: 20 NO OF LSC:31	REGIONAL DIRECTOR IGNOU REGIONAL CENTRE NEAR MOUNT HERMON SCHOOL DON BOSCO HR.SEC SCHOOL ROAD KENUOZOU KOHIMA – 797 001 NAGALAND  PH.OFF : 0370-2260366 / 2260167 FAX : 0370-2260216 EMAIL : rckohima@ignou.ac.in	DR. T.IRALU, RD	<b>STATE OF NAGALAND</b> (DISTRICT: KOHIMA, DIMAPUR, WOKHA, MOKOKCHUNG, ZUNHEBOTO, TUENSANG, LONGLENG, KIPHIRE, MON, PEREN, PHEK)
32	<b>KOLKATA</b> RC CODE: 28 NO OF LSC:105	REGIONAL DIRECTOR IGNOU REGIONAL CENTRE BIKASH BHAWAN, 4TH FLOOR NORTH BLOCK SALT LAKE, BIDHAN NAGAR KOLKATA – 700 091 WEST BENGAL  PH.OFF : 033-23349850, 23592719 FAX : 033-23347576 EMAIL : rckolkata@ignou.ac.in	DR. SUJIT KUMAR GHOSH,RD MR. SANTANU MUKHERJEE, ARD DR NAVITA CHOUDHARY,ARD MR SAPAN KUMAR RAM,DR MR. KAMAL KANT SAHAY, AR MR ALOK KUMAR DAS, AR	<b>STATE OF WEST BENGAL</b> (DISTRICT: KOLKATA, NORTH 24 PARAGANAS, SOUTH 24 PARAGANAS, PURBA, MEDINIPUR, PASCHIM MEDINIPUR, BANKURA, HOWRAH, HOOGHLY, PURULIA, BURDWAN, NADIA)
33	<b>KORAPUT</b> RC CODE: 44 NO OF LSC:54	REGIONAL DIRECTOR IGNOU REGIONAL CENTRE DISTRICT AGRICULTURE OFFICE RD BEHIND PANCHAYAT BHAVAN KORAPUT – 764 020 ORISSA  PH.OFF : 06852-252982 / 251535 FAX : 06852-252503 EMAIL : rckoraput@ignou.ac.in	DR. ABHILASH NAYAK, RD SH. DHARMA RAO GONIPATI, ARD DR LATIKA KUMARI MISHRA,ARD DR. DOMBARA ANANDA ,ARD SH. SANZAYA PATEL, AR	<b>STATE OF ORISSA</b> (DISTRICT: KORAPUT, MALKANGIRI, RAYAGADA, NABARANGPUR, KALAHANDI, NUAPADA, BOLANGIR, SONEPUR, BOUDH),  <b>STATE OF CHHATTISGARH</b> (DISTRICT: BASTAR, NARAYANPUR, DANTEWADA, BIJAPUR)